

Florida Medicaid Family Planning Waiver Program

**Family Planning Waiver DY24 (SFY2021-2022) Final
Evaluation Report**

MED206: Deliverable 30

October 24, 2023



Prepared by the Department of Behavioral Sciences and Social Medicine at the Florida State University College of Medicine with assistance from the Department of Health Outcomes and Biomedical Informatics at the University of Florida under contract with the Florida Agency for Health Care Administration.

Table of Contents

Table of Contents	2
Executive Summary	4
Findings.....	6
Conclusions	8
Recommendations	8
Definitions and Acronyms	10
Introduction and Background.....	12
FPW Program Evaluation Research Questions.....	13
Data and Methods	15
Data.....	15
DOH Birth Vital Statistics (BVS) birth certificates (CY2000 – CY2022)	15
DOH Healthy Start Prenatal Screens (CY2011 – CY2022).....	15
Medicaid Eligibility Files (CY2015-CY2022).....	15
Medicaid Claims Files (CY2015-CY2022)	16
Medicaid Enrollment Files (CY2015-CY2022).....	16
FPW Eligibility and Enrollment Survey	16
FPW Eligible Women and Enrollee Participation Surveys.....	16
FPW Enrollee Satisfaction Survey.....	16
DOH Staff Survey	16
Methods.....	17
FPW Program Study Population.....	18
General Findings	19
RQ1: What differences in recipient demographic characteristics exist between FPW enrollees and eligible women who do not enroll in FPW per Demonstration Year?	19
RQ2: What are the interbirth intervals for FPW enrollees compared to eligible women who do not enroll in the FPW program who gave birth during the study period?	20
RQ3: What is the rate of unintended pregnancies for FPW enrollees and eligible women who do not enroll in the FPW program per Demonstration Year?	21
RQ4: What is the rate of low birth weight and preterm births for FPW enrollees compared to women who are eligible but do not enroll in the FPW program?.....	24
RQ5: Is the FPW achieving cost savings by slowing the birth rate?	26

RQ6: What are the reasons that women eligible for the FPW program choose to not enroll in the FPW program and the reasons women enrolled in the FPW program do not participate? 27

RQ7: How do FPW enrollees utilize covered health services?..... 29

RQ8: What gaps in coverage are experienced by FPW enrollees over time?..... 30

RQ9: Are FPW enrollees satisfied with services? 31

RQ10: What strategies are being used by the Department of Health to increase FPW participation rates? 33

Conclusions, Positive Outcomes, Challenges, and Lessons Learned 36

Lessons Learned and Recommendations 37

References 38

Appendices 40

Appendix A: Specific Methods for Each Research Question 40

Appendix B: Qualitative Surveys..... 43

Appendix C: Healthy Start Prenatal Screen..... 46

Appendix D: Interbirth Interval (IBI) Methodology and Flowchart 47

Appendix E: Unintended Pregnancies Methodology and Flowchart 49

Appendix F: Cost Saving Methodology..... 51

Appendix G: Procedure Codes for All FPW Services..... 52

Appendix H: Procedure Codes to Identify Family Planning Services, Cancer Screening Services, and STD Screening Services..... 57

**Florida Medicaid Family Planning Waiver (FPW) Program
Evaluation Report
Demonstration Years (DY) 24 (SFY 2021-2022)**

Executive Summary

Florida's Family Planning Waiver was initially approved on August 23, 1998. Since the program's inception, the Department of Health (DOH) has been the operational agency tasked with determining eligibility and maintaining participant enrollment for Family Planning Waiver services. The Bureau of Family Health Services within DOH works with the local county health departments to provide a vast array of both Medicaid and non-Medicaid community health and family planning services, including preconception counseling, pregnancy tests, screening and treatment of sexually transmitted infections, cancer screening, and contraception supplies.

The purpose of the program is to expand eligibility for family planning services for up to two years to individuals who otherwise are not financially eligible for full Medicaid. Eligibility is limited to women of childbearing age, 14 years of age up through and including women who are 55 years of age; who have a family income at or below 191 percent of the Federal Poverty Level (FPL) (post Modified Adjusted Gross Income (MAGI) conversion); who are not covered by a health insurance program that provides family planning services; and who have lost Medicaid coverage within the last two years, including women who lost Medicaid pregnancy coverage after 12 months postpartum. On June 16, 2023, the Centers for Medicare and Medicaid Services (CMS) approved the State's request to extend Florida's 1115(a) Family Planning Waiver through June 30, 2024.

Florida State University (FSU) in collaboration with the University of Florida (UF) was contracted to evaluate the FPW program through June 30, 2026. The evaluation team, in collaboration with the Agency and CMS, developed ten research questions (RQs) to guide this evaluation, which uses quantitative and qualitative analytical methods to support findings. The RQs addressed in this final report are:

- Research Question 1: What differences in recipient demographic characteristics exist between FPW enrollees and eligible women who do not enroll in FPW per Demonstration Year?
- Research Question 2: What are the interbirth intervals for FPW enrollees compared to eligible women who do not enroll in the FPW program who gave birth during the study period?

- Research Question 3: What is the rate of unintended pregnancies for FPW enrollees and eligible women who do not enroll in the FPW program per Demonstration Year?
- Research Question 4: What is the rate of low birth weight and preterm births for FPW enrollees compared to women who are eligible but do not enroll in the FPW program?
- Research Question 5: Is the FPW achieving cost savings by slowing the birth rate?
- Research Question 6: What are the reasons that women eligible for the FPW program choose to enroll or not enroll in the FPW program and the reasons women enrolled in the FPW program do not participate?
- Research Question 7: How do FPW enrollees utilize covered health services?
- Research Question 8: What gaps in coverage are experienced by FPW enrollees over time?
- Research Question 9: Are FPW enrollees satisfied with services?
- Research Question 10: What strategies are being used by the Department of Health to increase FPW participation rates?

According to the CMS approved Evaluation Design for the FPW approved extension period, the five objectives of the FPW program are:

- 1) to increase access to family planning services;
- 2) to increase child spacing intervals through effective contraceptive use;
- 3) to reduce the number of unintended pregnancies in Florida;
- 4) to reduce Florida's Medicaid costs by slowing the birth rate among females who would otherwise be eligible for Medicaid pregnancy-related services; and,
- 5) to improve or maintain health outcomes for the target population as a result of access to family planning services and/or family planning-related services.

The primary data sources used to evaluate the effectiveness of the FPW program during the extension period include Medicaid eligibility, enrollment, and claims files, State of Florida Hospital Discharge data, Florida birth certificates, Healthy Start Prenatal Risk Screen data from DOH, and qualitative survey data.

Findings

DY24 Demographics (RQ1): The total number of FPW enrollees in DY24 was 52,169. The total number of FPW eligible individuals who did not enroll was 251,224. The average age of FPW enrollees and non-enrollees was similar; FPW enrollees were, on average, 30.7 years of age (SD=6.0) while non-enrollees were also, on average, 30.7 years of age (SD=9.7). Regarding race, most FPW enrollees identified as either White (34.8%), Black (27.7%), or Hispanic (27.2%). Most non-enrollees identified as either White (31.9%), Hispanic (31.6%), or Black (24.6%).

Interbirth intervals (RQ2): After controlling for age, race, and ethnicity, interbirth intervals (IBI) were slightly longer in DY24 for eligible women who did not enroll compared to FPW enrollees. As shown in Table 2, in DY24, the IBI for non-enrollees was four months longer compared to enrollees.

Unintended pregnancies (RQ3): In DY24, the percent of FPW enrollees who responded “No” to the question, “Is this a good time for you to be pregnant?” was 9.19% (Table 3a, question 5) as compared to 11.21% of FPW non-enrollees (Table 3b, question 5). Responses to the question, “Thinking back to just before you got pregnant, did you want to be?” indicated that 45.57% of FPW enrollees (Table 3a, question 14) answered “later” or “not pregnant” as compared to 51.83% of FPW non-enrollees (Table 3b, question 14). When combining all negative responses across both questions 5 and 14 to capture the overall rate of unintended pregnancies, 47.17% of FPW enrollees indicated that their pregnancy was unintended as compared to 53.02% of FPW non-enrollees. FPW enrollees have significantly lower odds of a reported unintended pregnancy for DY24 compared with FPW non-enrollees, when controlling for age and race/ethnicity.

Low birth weight and preterm births (RQ4): The proportion of low weight births and pre-term births was slightly larger for FPW enrollees in DY24. For FPW enrollees in DY24, 10.82% of births were considered low birth weight, compared with 9.78% for the FPW non-enrollees. The rate of pre-term births for the FPW enrollees in DY24 was 12.59%, compared with 11.24% for the FPW non-enrollees.

Cost savings (RQ5): Cost savings were calculated based on differences in the birth rate between FPW enrollees and eligible women who did not enroll in FPW. Adjusted logistic regression model results showed a statistically significant difference in birth rates for FPW enrolled women compared to those eligible but not enrolled in DY24. As shown in Table 5a, women enrolled in the FPW program during DY24 averted 245

births than women eligible but not enrolled in the FPW program for a cost savings of approximately \$2.7 million dollars. It should be noted that in DY24, FPW enrollment was affected by the COVID-19 Public Health Emergency. Reasons for non-enrollment or non-participation (RQ6): In accordance with the CMS-approved Evaluation Design, no additional survey data was obtained for DY24. In previous reports on surveys conducted in DY20 and DY22, women who were eligible for the FPW program but did not enroll (N=25) were asked reasons for non-enrollment. Seventy-two percent of women (N=18) responded that they were not aware of the FPW program. For women who were enrolled but did not participate in the program (did not use any of the services offered; N=25), the most common reason cited (N=12; 48%) was that they were not aware that they were enrolled in the program and/or were not aware of the services offered through the program.

Service utilization (RQ7): The overall participation rate, defined as the number of enrollees that used at least one covered service as a proportion of total enrollees, was 10.9%. The participation rate of first-year enrollees, defined as the number of first-year enrollees that used at least one covered service as a proportion of total first-year enrollees, was 5.3%. The participation rate of second-year enrollees was 11.6%.

Coverage gaps (RQ8): Among DY24 enrollees, 8.4% only had coverage during their first 12 months, while 91.6% maintained coverage during their second year of eligibility. Among the women in DY24 who were enrolled beyond the first year, 30.3% lost coverage after two years. The average length of time between prior enrollment ending and DY24 enrollment beginning was 7.2 months and ranged from 1 to 28 months.

Satisfaction with services (RQ9): Nearly all enrollees that received services (97%; N=28) reported being satisfied (i.e., either “Satisfied” or “Very Satisfied”) with the types of services offered, while a vast majority of enrollees (90%; N=26) reported being satisfied with the information and customer service provided to them regarding the FPW program. Among enrollees that received specified services (i.e., contraceptive care, STD testing, or cervical cancer screening), all of them reported being satisfied with contraceptive care (N=24), STD testing (N=12), and cervical cancer screening (N=12) (Table 1). Of enrollees who accessed the family planning services, a vast majority of them (90%; N=27) reported it was easy to access the family planning services (i.e., responded “Very easy” or “Somewhat easy” to the question).

Table 1: Enrollee Satisfaction Survey Quantitative Results for DY24

Response Category	Satisfaction Category		
	Contraceptive care (N=24)	STD Testing (N=12)	Cervical Cancer Screening (N=12)
	% (N)	% (N)	% (N)
Very Satisfied	63 (15)	75 (9)	67 (8)
Satisfied	37 (9)	25 (3)	33 (4)
Dissatisfied	0 (0)	0 (0)	0 (0)
Very Dissatisfied	0 (0)	0 (0)	0 (0)

Strategies being used by DOH clinics to increase participation in FPW (RQ10): In accordance with the CMS approved Evaluation Design, no additional survey data was obtained for DY24. As reported for DY20/DY21, 9 of the 67 (13%) DOH clinics responded to our survey. Strategies identified included external outreach, staff incentivization, pre-appointment eligibility review, sharing information during appointments, and follow-up with eligible patients.

Conclusions

Enrollment rates among women eligible for the FPW program remain very low, with about 17% of eligible women enrolling in the program. Additionally, only 11% of FPW enrollees used any FPW services. While the FPW program has proven to be very successful among women who participated in the program, the impact of the program is greatly reduced because of very low enrollment and participation rates. The vast majority of eligible but unenrolled women who were interviewed indicated that they were unaware of the program. Even women who were enrolled and used services provided through the FPW program were often unaware that they were enrolled and receiving services through the FPW. Additionally, DY24 represents the first full year of the COVID-19 pandemic, which greatly reduced the number of women eligible for the FPW program as women were able to retain their Medicaid coverage through the public health emergency. As a result, findings for DY24 were often different compared to previous demonstration years. It will be important to continue to monitor outcomes of the program during the course of the pandemic as well as when the public health emergency ended in April of 2023.

Recommendations

Given the consistent finding of lack of knowledge of the FPW program, both among eligible women who do not enroll and enrolled women, future activities should focus on increasing enrollment and enrollee

participation rates in the FPW program through interventions designed to increase awareness of the program. This is particularly important since the COVID-19 public health emergency came to an end in April 2023, which will potentially result in a large increase in the number of women eligible for the FPW program. Potential strategies should be considered and could include using strategies identified by the DOH clinics, including outreach, education, and proactively engaging with women to get them enrolled in the FPW program if additional information is needed for their enrollment for the second 12-month period. Increasing enrollment and participation in the program will likely increase the number of women experiencing the positive outcomes of the program and potentially generate cost savings by improving or maintaining health outcomes.

Report Prepared By:

Principal Investigator

Jeffrey S. Harman, PhD

Evaluation Team

Carla Bredehoeft, MS
Russell Bradbury, MS
Rhonda Collins, EdD, MS, PMP
Jessica Day, MPH
Affan Ghaffari, PhD
Samantha Goldfarb, DrPH
Katelyn Graves, PhD
M. Bryant Howren, PhD, MPH
Heidi Kinsell, PhD
Jiawei Li, MS
Yanning Wang, MS

Definitions and Acronyms

Aid category effective date: The first day of the month in which the enrollee became eligible. For example, if an enrollee became eligible on the 17th of the month, the effective date would be retroactive to the 1st of the month.

Enrollee: Refers to a woman who has a Family Planning (FP) Aid Category Code in the Medicaid Eligibility file and the Aid Category Effective Date falls within the study period. This includes a woman who has a Family Planning (FP) Aid Category Code in the Medicaid Eligibility file and whose eligibility period falls within the study period by any given day or span of days regardless of the Aid Category Effective Date.

Department of Children and Families (DCF): The Florida agency responsible for determining all Medicaid eligibility.

Demonstration Year (DY): The period for which the Family Planning Waiver was approved (i.e., state fiscal year).

Demonstration Year (DY) 20: Represents the state fiscal year of July 1, 2017 to June 30, 2018.

Demonstration Year (DY) 21: Represents the state fiscal year of July 1, 2018 to June 30, 2019.

Demonstration Year (DY) 22: Represents the state fiscal year of July 1, 2019 to June 30, 2020.

Demonstration Year (DY) 23: Represents the state fiscal year of July 1, 2020 to June 30, 2021.

Demonstration Year (DY) 24: Represents the state fiscal year of July 1, 2021 to June 20, 2022.

Department of Health (DOH) frontline staff: Health care staff who work on the frontlines of FPW program services in DOH clinics, including DOH staff who interact directly with women who are 14 years of age through and including women who are 55 years of age who are potentially eligible for FPW services.

Eligibility period: The span of dates comprising the recipient's Family Planning Waiver eligibility.

Eligible: A woman who is 14 years of age through and including a woman who is 55 years of age with a family income at or below 191% of the Federal Poverty Level (FPL) who loses Medicaid pregnancy coverage after 60 days postpartum or a woman who is 14 years of age through and including a woman who is 55 years of age with a family income at or below 191% of the FPL for a period of two years after losing Medicaid coverage for reasons other than the expiration of the 60-day postpartum period.

Interbirth interval (IBI): A continuous variable measured in months of the average interval between the end of the most recent previous pregnancy and last menstrual date of the current pregnancy as indicated on the birth certificate.

Modified Adjusted Gross Income (MAGI) Conversion: MAGI-based eligibility standards that are used to determine Medicaid and CHIP eligibility.

Non-Enrollee: An eligible woman who does not enroll in the FPW program.

Observed birth: Refers to a live birth recorded in the DOH's annual Florida Vital Statistics file.

State Fiscal Year (SFY): Includes the time period beginning on July 1 and ending on June 30.

Study Population: Includes women who are enrolled in the FPW program. The study population will be categorized based on date of enrollment, participation, and eligibility category.

Target Population: All FPW program enrollees.

Introduction and Background

The Florida Medicaid Family Planning Waiver (FPW) program is a Section 1115(a) waiver demonstration approved by the U. S. Department of Health and Human Services Centers for Medicare and Medicaid Services (CMS). The initial FPW demonstration was approved for a five-year period on August 23, 1998 and implemented October 1, 1998.

Since the program's inception on August 23, 1998, the Department of Health (DOH) has been the operational agency tasked with determining eligibility and maintaining participant enrollment for Family Planning Waiver services. The Bureau of Family Health Services within DOH works with the local county health departments to provide a vast array of both Medicaid and non-Medicaid community health and family planning services, including preconception counseling, pregnancy tests, screening and treatment of sexually transmitted infections, cancer screening, and contraception supplies.

The purpose of the program is to expand eligibility for family planning services for up to two years to individuals who otherwise are not financially eligible for full Medicaid. Eligibility is limited to women of childbearing age, 14 years of age up through and including women who are 55 years of age; who have a family income at or below 191 percent of the Federal Poverty Level (FPL) (post Modified Adjusted Gross Income (MAGI) conversion); who are not covered by a health insurance program that provides family planning services; and who have lost Medicaid coverage within the last two years, including women who lost Medicaid pregnancy coverage after 12 months postpartum.

On June 16, 2023, the Centers for Medicare and Medicaid Services (CMS) approved the State's request to extend Florida's 1115(a) Family Planning Waiver through June 30, 2024. As part of a previous extension request, CMS requested a change in the eligibility determination process from the FPW program. On February 12, 2022, the eligibility determination process for the program was integrated into the Medicaid State Plan eligibility system, operated by the Department of Children and Families (DCF). DCF is the Florida agency responsible for determining all Medicaid eligibility. They have ownership of the Access Florida System where Medicaid applications are submitted and eligibility determinations are made. This system works in conjunction with the Florida Medicaid Management Information System to track individuals' Medicaid eligibility.

Additionally, the State began automatically enrolling all eligible women into the FPW program for the initial 12-month period as well as for the second 12-month period if no additional information is needed to determine eligibility. Thus, most eligible women are now automatically enrolled for the full 24-month period.

This final report is part of a series of reports produced by Florida State University (FSU) in collaboration with the University of Florida (UF) in evaluating the FPW program through June 30, 2026. The Special Terms and Conditions (STCs) of the 1115(a) waiver renewal requires an evaluation of the demonstration during the renewal period.

One of the goals of the FPW program is to increase the number of women receiving FPW services who are 14 years of age up through and including women who are 55 years of age and have incomes at or below 191% of the FPL (post MAGI conversion). Specifically, the FPW program has five objectives:

1. To increase access to family planning services;
2. To increase child spacing intervals through effective contraceptive use;
3. To reduce the number of unintended pregnancies in Florida;
4. To reduce Florida's Medicaid costs by slowing the birth rate among females who would otherwise be eligible for Medicaid pregnancy-related services; and,
5. To improve or maintain health outcomes for the target population as a result of access to family planning services and/or family planning-related services.

FPW Program Evaluation Research Questions

To evaluate whether Florida's FPW program achieved its objectives, the following 10 research questions are addressed:

- Research Question 1: What differences in recipient demographic characteristics exist between FPW enrollees and eligible women who do not enroll in FPW per Demonstration Year?
- Research Question 2: What are the interbirth intervals for FPW enrollees compared to eligible women who do not enroll in the FPW program who gave birth during the study period?
- Research Question 3: What is the rate of unintended pregnancies for FPW enrollees and eligible women who do not enroll in the FPW program per Demonstration Year?

- Research Question 4: What is the rate of low birth weight and preterm births for FPW enrollees compared to women who are eligible but do not enroll in the FPW program?
- Research Question 5: Is the FPW achieving cost savings by slowing the birth rate?
- Research Question 6: What are the reasons that women eligible for the FPW program choose to enroll or not enroll in the FPW program and the reasons women enrolled in the FPW program do not participate?
- Research Question 7: How do FPW enrollees utilize covered health services?
- Research Question 8: What gaps in coverage are experienced by FPW enrollees over time?
- Research Question 9: Are FPW enrollees satisfied with services?
- Research Question 10: What strategies are being used by the Department of Health to increase FPW participation rates?

Data and Methods

Data

The data sources for this project come from the Florida Department of Health (DOH) and the Agency for Health Care Administration (AHCA or “the Agency”). The sources include: (1) Vital Statistics birth certificate data; (2) Healthy Start Prenatal Risk Screen data; (3) Qualitative survey data for FPW enrollees and non-enrollees as well as DOH staff; and (4) Medicaid enrollment, eligibility, and claims files. Each data source is described below.

DOH Birth Vital Statistics (BVS) birth certificates (CY2000 – CY2022)

Birth certificate data include personal identifiers for both the infant and the mother, including names, date of birth, address, and social security number. The identifiers were used to link births that occurred during the evaluation period to previous births since year 2000 using the mother’s personal identifiers. This linkage allowed the research team to estimate the length of the interbirth interval for FPW enrollees and eligible women not enrolled in FPW. Data elements to estimate gestational age and conception date were used to answer the research questions. There is an 18-month lag between the date of a birth and the date a final birth certificate is released by BVS. Preliminary birth certificate data may be generated earlier within the Florida DOH, but birth records are not available until reporting counties have had up to one year to resubmit final corrected versions to the State Register of Vital Statistics.

DOH Healthy Start Prenatal Screens (CY2011 – CY2022)

Healthy Start Prenatal Risk Screen data include personal identifiers such as names, date of birth, address, and social security number. Data elements to estimate gestational age and conception date were used in combination with pregnancy intendedness responses to answer the research questions. There is an approximate ten-month lag between the completion of the Healthy Start Prenatal Risk Screen and the time the data is released by DOH.

Medicaid Eligibility Files (CY2015-CY2022)

Data on Medicaid eligibility include personal identifiers for all female recipients including names, date of birth, address, and social security number that are linked to the birth certificate and the Healthy Start Prenatal Screens. The aid category code and the eligibility begin and end dates were used to derive enrollment and participation in the program.

Medicaid Claims Files (CY2015-CY2022)

Monthly Medicaid claims files include all claims paid during the month, but may not include claims for all services provided during the month. There is a time lag between the time the service is provided and when the claim is submitted and paid. Most claims are submitted and paid within three months of the service date; however, providers have up to one year to submit claims. Data elements in the claims files include date of service, amount paid, program code, procedures, and diagnosis to derive program participation measures.

Medicaid Enrollment Files (CY2015-CY2022)

Medicaid enrollment files include personal identifiers for all female recipients including names, date of birth, address, and social security number that are linked to the birth certificate and the Healthy Start Prenatal Screens.

FPW Eligibility and Enrollment Survey

Qualitative interviews were conducted with FPW enrollees and eligible women who do not enroll in FPW program through telephone and text-based surveys in SFY2019-2020 (for DY20/21) and SFY2020-2021 (for DY22) to assess the reasons that women eligible for the FPW program choose to enroll or not enroll in the FPW program. In accordance with the CMS approved Evaluation Design, no additional survey data was obtained for DY24.

FPW Eligible Women and Enrollee Participation Surveys

Seventy-five (75) qualitative telephone interviews were conducted with eligible women who do not enroll in the FPW program and FPW enrollees who do not use FPW services to identify common themes. In accordance with the CMS approved Evaluation Design, no additional survey data was obtained for DY24.

FPW Enrollee Satisfaction Survey

Quantitative/qualitative interviews were conducted in January and February 2023 with FPW enrollees who used FPW services during DY24 through a telephone-based satisfaction survey.

DOH Staff Survey

Qualitative interviews were conducted with DOH staff through an Agency approved web-based survey in SFY2019-2020 and SFY2020-2021 to determine common FPW strategies used by DOH staff to increase FPW engagement/participation rates. In accordance with the CMS approved Evaluation Design, no additional survey data was obtained for DY24.

Methods

The research team used a mixed methods approach, which is a combination of quantitative and qualitative methods, to evaluate Florida's FPW program. Detailed descriptions of the methods used for each of the research questions are included in Appendix A.

To determine whether the FPW program achieved its goals, the research team analyzed outcome measures associated with each of the five program objectives which included:

Objective 1 (To increase access to family planning services):

- i. The number of eligible women receiving Title XIX funded family planning services each year of the demonstration.

Objective 2 (To increase child spacing intervals through effective contraceptive use):

- i. Average interbirth intervals (IBI) in number of months for FPW enrollees compared to eligible women who did not enroll in the FPW program.

Objective 3 (To reduce the number of unintended pregnancies in Florida):

- i. The number of unintended pregnancies among FPW enrollees and eligible women who did not enroll in the FPW program.

Objective 4 (To reduce Florida's Medicaid costs by slowing the birth rate of FPW enrollees compared to eligible women who did not enroll in the FPW program):

- i. Cost savings to Medicaid for the number of averted births.

Objective 5 (To improve or maintain health outcomes for the target population as a result of access to family planning services and/or family planning-related services):

- i. Number of low birth weight and preterm births.

FPW Program Study Population

The study population includes all women who were enrolled in the FPW program during DY24 (SFY2021-2022). While not all evaluation questions will use a comparison population, those that do will use women who are eligible for the FPW program in a given year, but who do not enroll in the program. This will maximize comparability, as these women will also be of childbearing age and will have recently lost Medicaid coverage and will, thus, likely have similar incomes and sociodemographic characteristics as FPW enrollees. While selection bias using this population is possible, it will be minimal given that fewer than 20% of eligible women enroll in FPW in any given year. Because most of the eligible women who do not enroll are likely to still have need for and benefit from family planning services, it is unlikely that the decision to enroll or not enroll is strongly correlated with need for these services, which is the main cause of selection bias. Depending on the research question, qualitative analyses target eligible women who do not enroll in the FPW, FPW enrollees, FPW enrollees who do not use FPW services, FPW enrollees who use services, and Department of Health (DOH) staff who administer the FPW program.

Additionally, some of the evaluation questions will compare first year FPW enrollees to second year FPW enrollees. First year enrollees are those enrollees within 12 months of their Aid Category Effective Date in the study period (e.g., for DY24, an Aid Category Effective Date between July 1, 2021, and June 30, 2022). Second year enrollees are those enrollees between 12 and 24 months of their Aid Category Effective Date within the study period.

General Findings

RQ1: What differences in recipient demographic characteristics exist between FPW enrollees and eligible women who do not enroll in FPW per Demonstration Year?

FPW Enrollees

Table 1a presents the demographic characteristics of FPW enrollees for DY24 (SFY2021-2022) by age, race, and ethnicity group. Specifically, the total number of eligible FPW enrollees was 52,169; the average age of enrollees was 30.7 years (SD = 6.0; range = 14-56). Most enrollees identified as either White (34.8%), Black (27.7%), or Hispanic (27.2%).

Table 1a. Demographic Characteristics of FPW Enrollees DY24

Race/Ethnicity	Age Group (years)						Total	
	14-19	20-29	30-34	35-44	45-55	56+	Number	Percent
American/Asian Indian	2	84	43	31	3	0	163	0.3
Asian	2	208	235	266	14	0	725	1.4
Black	57	6,503	4,099	3,514	259	2	14,434	27.7
Hispanic	83	6,081	4,246	3,595	207	1	14,213	27.2
Other	39	1,852	1,282	1,224	90	0	4,487	8.6
White	140	8,663	5,079	4,003	261	1	18,147	34.8
Total FPW Enrollees	323	23,391	14,984	12,633	834	4	52,169	
(%)	0.6	44.8	28.7	24.2	1.6	0.0		100

FPW Eligible Non-Enrollees

Table 1b presents the demographic characteristics of FPW eligible individuals who did not enroll in DY24 (SFY2021-2022) by age, race, and ethnicity group. Specifically, the total number of FPW eligible individuals who did not enroll in DY24 with known age, race, and ethnicity data was 251,224; the average age of non-enrollees was 30.7 years (SD=9.7; range = 14-56). Most eligible females with known race and ethnicity data who did not enroll identified as either White (31.9%), Hispanic (31.6%), or Black (24.6%).

Table 1b: Demographic Characteristics of FPW Eligible Non-Enrollees DY24

Race/Ethnicity	Age Group (years)						Total	
	14-19	20-29	30-34	35-44	45-55	56+	Number	Percent
American/Asian Indian	71	234	117	150	71	9	652	0.2
Asian	365	1,003	577	844	309	12	3,110	1.2
Black	5,429	25,233	11,845	13,973	4,865	335	61,680	24.6
Hispanic	8,239	30,708	15,210	18,013	6,743	353	79,266	31.6
Other	3,648	9,342	4,309	5,840	2,937	242	26,318	10.5
White	8,608	29,646	14,716	18,073	8,473	682	80,198	31.9
Total Non-Enrollees	26,360	96,166	46,774	56,893	23,398	1,633	251,224	
(%)	10.5	38.3	18.6	22.6	9.3	0.7		100

RQ2: What are the interbirth intervals for FPW enrollees compared to eligible women who do not enroll in the FPW program who gave birth during the study period?

To measure the impact of the FPW increasing the child spacing interval through effective contraceptive use, the research team compared the average interbirth interval (IBI) of enrollees and FPW eligible non-enrollees for DY24. For this report, the research team conducted comparisons of average IBI length in number of months by enrollment status. To answer this question, birth records are required for 24 months after the end of the demonstration year. In the analysis, the denominator includes only women who had at least two births within the 24-month index period. Only those women who have a second birth were included in the calculations, thus, dropping all women who did not give birth a second time during the study period, which should be considered a positive outcome attributable to the program. By calculating the number of women who do not give birth within 24 months of enrollment in the program, women who do not have a second birth can be included in the calculations related to the positive outcomes of the program. The methods and inclusion and exclusion criteria for calculating the IBIs are found in detail in *Appendix D*.

The unadjusted average IBIs in number of months for FPW enrollees and FPW non-enrollees for DY24 are found in Table 2. In DY24, the average IBI for women enrolled in the FPW program was 10.9 months and the average IBI for women not enrolled in the FPW program was 14.9 months. To assess whether the IBIs were statistically significantly different between FPW enrollees and eligible women not enrolled, the research team performed regression models adjusting for age, race, and ethnicity. In DY24, FPW enrollment was affected by the Medicaid coverage emergency circumstances of the demonstration year.

Table 2: DY24 Average Interbirth Intervals in Months for FPW Enrollees and Non-Enrollees

	DY24 (2021-2022)
Average IBI for FPW Enrollees (months)	10.9
Average IBI for FPW Non-Enrollees (months)	14.9

RQ3: What is the rate of unintended pregnancies for FPW enrollees and eligible women who do not enroll in the FPW program per Demonstration Year?

The number of unintended pregnancies was measured by comparing responses to questions 5 and 14 on the Healthy Start Prenatal Risk Screen among FPW participants and non-participants. For women who became pregnant anytime during DY24, the research team identified FPW enrollees who indicated on the Healthy Start Prenatal Risk Screens that their pregnancies were unwanted or unintended. The methods and inclusion and exclusion criteria for calculating the unintended pregnancies are found in detail in Appendix E. Tables 3a and 3b illustrate the number of responses to each question on the Healthy Start Prenatal Risk Screen as well as the rates of unintended pregnancies. Table 3c shows odds ratios for logistic regression models of unintended pregnancies, by FPW enrollee status.

DY24. For DY24 (SFY2021-2022), 9.19% (Table 3a) of FPW enrollees indicated that it was not a good time to be pregnant (question 5) as compared to 11.21% (Table 3b) of FPW non-enrollees. Responses to question 14 indicated that 45.57% of FPW enrollees answered “later” or “not pregnant” as compared to 51.83% of FPW non-enrollees. When combining all negative responses across both questions 5 and 14 to capture the overall rate of unintended pregnancies, 47.17% of FPW enrollees indicated that their pregnancy was unintended as compared to 53.02% of FPW non-enrollees. In addition, FPW enrollees have significantly lower odds of a reported unintended pregnancy (OR: 0.80, $p < .001$) compared with FPW non-enrollees, when controlling for age and race/ethnicity (Table 3c).

The Centers for Disease Control and Prevention’s Pregnancy Risk Assessment and Monitoring System (PRAMS) presents national and state-level estimates of pregnancy intention as four categories: 1) mistimed pregnancy, 2) unwanted pregnancy, 3) unsure whether wanted pregnancy, and 4) intended pregnancy. In 2020 (the latest publicly available year of data), 39.5% of women who recently gave birth in the U.S. and completed the PRAMS survey reported their pregnancy was unintended (17.7% reported their pregnancy

was mistimed, 6.3% reported their pregnancy was unwanted, and 15.5% said they were unsure) (CDC, 2022). It is important to note that the national PRAMS estimates do not account for income or Medicaid status and are therefore not likely to be directly comparable to the FPW enrollee and FPW non-enrollee groups.

Table 3a: Rate of Unintended Pregnancies for FPW Enrollees, DY24 (SFY2021-2022)

Question 5. Is this a good time for you to be pregnant?	
Yes (#)	1,205
No (#)	122
Total Responses Question 5 (#)	1,327
Question 5 Rate of Unintended Pregnancies (%)	9.19
Question 14. Thinking back to just before you got pregnant, did you want to be?	
Pregnant Now (#)	725
Pregnant Later (#)	453
Not Pregnant (#)	154
Total Pregnant Later & Not Pregnant (#)	607
Total All Responses Question 14 (#)	1,332
Question 14 Rate of Unintended Pregnancies (%)	45.57
Negative Responses Question 5 & Question 14	
Question 5 = No (#)	122
Question 5 = Yes & Question 14 = “pregnant later” or “not pregnant” (#)	504
Total Number of Negative Responses Question 5 & Question 14 (#)	626
Total Number of Responses Question 5 & Question 14* (#)	1,327
Overall Rate of FPW Participant Unintended Pregnancies (%)	47.17

* The total number of responses for questions 5 and 14 represents those unique individuals who responded to either question 5 or question 14 or both.

Table 3b: Rate of Unintended Pregnancies for FPW Non-Enrollees, DY24 (SFY2021-22)

Question 5. Is this a good time for you to be pregnant?	
Yes (#)	6,949
No (#)	877
Total Responses Question 5 (#)	7,826
Question 5 Rate of Unintended Pregnancies (%)	11.21
Question 14. Thinking back to just before you got pregnant, did you want to be?	
Pregnant Now (#)	3,791
Pregnant Later (#)	2,989
Not Pregnant (#)	1,090
Total Pregnant Later & Not Pregnant (#)	4,079
Total All Responses Question 14 (#)	7,870
Question 14 Rate of Unintended Pregnancies (%)	51.83
Negative Responses Question 5 & Question 14	
Question 5 = No (#)	877
Question 5 = Yes & Question 14 = “pregnant later” or “not pregnant” (#)	3,273
Total Number of Negative Responses Question 5 & Question 14 (#)	4,150
Total Number of Responses Question 5 & Question 14* (#)	
	7,826
Overall Rate of FPW Non-Participant Unintended Pregnancies (%)	53.02

* The total number of responses for questions 5 and 14 represents those unique individuals who responded to either question 5 or question 14 or both.

Table 3c: Adjusted Odds Ratios (95% CI) for Unintended Pregnancies, DY24 (SFY2021-22)

	Unintended Pregnancy (Total # of Negative Responses to Question 5 & Question 14)
FPW Enrollee	0.80*** (0.71-0.91)
Age	0.96*** (0.95-0.96)
Race/Ethnicity	
White	Reference
Black	1.89*** (1.70-2.11)
Hispanic	0.89* (0.80-0.99)
Asian	0.69 (0.46-1.08)
American/Asian Indian & Other	1.14 (0.97-1.34)

†p<10;*p<05;**p<01;***p<001

RQ4: What is the rate of low birth weight and preterm births for FPW enrollees compared to women who are eligible but do not enroll in the FPW program?

DY24 births were identified by a date of birth that occurred during DY24 (July 1, 2021-June 30, 2022). Cases with missing birth weight and/or clinical conception dates were excluded (N=44). Low birth weight births were identified by reported birth weight less than 2,500 grams. Pre-term births were classified as births occurring before 37 weeks gestation. Gestation length was calculated using the estimated clinical conception dates and dates of birth (16 cases with a gestation span of 99 weeks were excluded). These birth records were then matched to DY24 FPW enrollees and FPW non-enrollees. For the DY24 FPW enrollees, DY24 births were excluded if they did not happen during the woman’s enrollment span (n=62), for a total of 3,281 births to DY24 FPW enrollees. There were 32,660 DY24 births to FPW non-enrollees.

Table 4a shows the number of births considered “low birth weight” (<2,500 grams) and “pre-term births” (<37 weeks) to FPW enrollees and non-enrollees for DY24. In DY24, there were 3,281 births to FPW enrollees and 32,660 births to FPW non-enrollees. Of the 3,281 births to FPW enrollees in DY24, 10.82% (355 births) were classified as low birth weight, compared to 9.78% (3,195) of births to FPW non-enrollees. The proportion of pre-term births to FPW enrollees was slightly larger at 12.59% (413 births), compared

with 11.24% (3,672) of births to FPW non-enrollees. National Vital Statistics Data show that 8.52% of all U.S. births in 2021 were classified as low birth weight, and 10.49% of all births were classified as pre-term (CDC, 2022). Note that “low birth weight” and “pre-term births” are not mutually exclusive categories and may overlap.

Table 4a: Rates of Low Birth Weight and Preterm Births for FPW Enrollees and FPW Non-Enrollees

	DY24	
Low birth weight (<2,500 grams)	Count	%
FPW Enrollees	355	10.82%
FPW Non-Enrollees	3,195	9.78%
Pre-term births (<37 weeks)		
FPW Enrollees	413	12.59%
FPW Non-Enrollees	3,672	11.24%
Total births		
FPW Enrollees	3,281	100%
FPW Non-Enrollees	32,660	100%

Note: “Low birth weight” and “pre-term births” are not mutually exclusive categories.

Table 4b: Odds Ratios (95% CI) for Low Birth Weight Births and Pre-term Births

	Low Birth Weight	Pre-Term Birth
FPW Enrollee	1.12† (1.00-1.26)	1.12* (1.00-1.25)
Age	1.01** (1.00-1.02)	1.02*** (1.02-1.03)
Race/Ethnicity		
White	Ref.	Ref.
Black	1.92*** (1.76-2.09)	1.49*** (1.38-1.62)
Hispanic	0.87** (0.78-0.96)	0.89* (0.81-0.97)
American/Asian Indian & Other	1.16* (1.01-1.33)	1.07 (0.95-1.21)

†p<10; *p<05; **p<01; ***p<001

Table 4b shows odds ratios for logistic regression models of low birth weight births and also pre-term births, by FPW enrollee status for DY24. FPW enrollees have significantly increased odds of a pre-term birth, compared with FPW non-enrollees, when controlling for age and race/ethnicity.

RQ5: Is the FPW achieving cost savings by slowing the birth rate?

The analytic strategy used for this question was determining the total number of averted births attributed to the FPW program. The team examined the differences in birth rates calculated for women enrolled in the FPW program and eligible women who did not enroll in the FPW program. In DY24, estimated cost savings were evident driven by the statistically significant difference in birth rates for FPW enrolled women compared to those eligible but not enrolled after controlling for age, race, and ethnicity. Generally, the eligible but not enrolled group had a slightly higher rate of birth than FPW enrollees. As shown in Table 5, women enrolled in the FPW program during DY24 averted 245 births as compared to women eligible but not enrolled in the FPW program for a total cost savings of approximately \$2.7 million dollars.

Table 5: DY24 Adjusted Medicaid Cost Savings

Demonstration Year (DY)	Difference in Number of Births	Average Medicaid Birth Costs (\$)	Gross Savings	FPW Program Expenditures*	Total Cost Savings (\$)
DY24	245	\$14,759	\$3,617,677	\$885,082	\$2,732,595

*Program expenditure data provided by AHCA.

Cost Savings Calculation

The analytic strategy used for this question was to determine the total number of averted births that were attributed to the FPW program. This was done by comparing a combined birth and conception rate between women enrolled in FPW and eligible women who did not enroll in the FPW program. Net cost savings was calculated by multiplying the number of averted births by average birth costs which includes the costs for the birth and the first year of the baby’s life and then subtracting FPW program expenditures. The methods and inclusion and exclusion criteria for calculating the cost savings are found in detail in Appendix F.

The number of averted births among enrollees was estimated using the following formula:

$$\text{Number of Births Averted} = (\text{Estimated number of births of FPW enrollees assuming they had the same birth rate as eligible women not enrolled in FPW in DY24} - \text{Observed number of births by FPW enrollees in DY24 (SFY2021-2022)})$$

Total Medicaid birth/infant costs for DY24 (SFY2021-2022) was estimated using the following formula:

Total DY24 Medicaid Birth Costs = Cost of services for the birth + costs of services provided to infants from birth to age 1

Average DY24 (SFY2021-2022) FPW Medicaid birth costs was calculated using the following formula:

Average DY24 Medicaid Birth Costs for FPW Enrollees = Total DY24 Medicaid birth costs / Total number of FPW enrollee births during DY24

The estimated gross cost savings due to averted births calculation is:

DY24 (SFY2021-2022) Averted Births Gross Cost Savings = DY24 (SFY2021-2022) Number of FPW Enrollee Births Averted x Average DY24 Medicaid Birth Costs for FPW Enrollees

RQ6: What are the reasons that women eligible for the FPW program choose to not enroll in the FPW program and the reasons women enrolled in the FPW program do not participate?

In accordance with the CMS approved Evaluation Design, no additional survey data was obtained for DY24. The primary data source for research question 6 is the responses to qualitative interviews previously conducted and reported by the evaluation team with eligible women who did not enroll in FPW as well as qualitative interviews with FPW enrollees who did not use services. Identification of common themes were analyzed using NVivo software (NVivo, 2015).

Survey Sample

Seventy-five (75) qualitative telephone interviews were conducted by the University of Florida survey research center. The respondents included:

- Twenty-five (25) women enrolled in the FPW program and using FPW services
- Twenty-five (25) women eligible for the FPW program but not enrolled, and
- Twenty-five (25) women enrolled in the FPW program but not using any FPW services

Eligible but not enrolled

Among the twenty-five (25) individuals from this group who participated in the survey, the most cited reason for not enrolling in the program was the lack of awareness (N=18) which can be further parsed into lack of awareness concerning the program (N=16) and lack of awareness concerning their enrollment (N=2). One

individual speaking of their lack of awareness concerning the program exclaimed, “I have never heard about the program, so I wouldn't have been able to enroll in something I didn't even know about.” One of the individuals citing not being cognizant of their eligibility for the program stated, “No one told me that I was eligible for this program.”

Other reasons cited for not enrolling included the following:

- Prior negative experience (N=2; e.g., planning with other natural means. The participant stated, “Using injections gave me bad reactions and stress. That's why I couldn't do the plan again.”)
- Incorrectly classified as eligible for the program (N=1; e.g., “Because I was told I was not eligible for Medicaid.”), and
- Lack of interest (N=3; e.g., “I don't want family planning. Not sexually active, I'm not interested in birth control.”)

Enrolled but did not participate

Similar themes emerged for the enrolled but did not participate group as were reported for the eligible but not enrolled group. Among the twenty-five (25) enrollees from this group who participated in the survey, the most cited reason was a lack of awareness (N=12). This can be further parsed into a lack of awareness of their enrollment (N=5) and a lack of knowledge about the program and what it offers (N=7). One enrollee speaking about the enrollment aspect said, “Actually, I didn't know I am enrolled in the program. Never heard that lingo before.” Another enrollee speaking about their lack of knowledge declared, “I do not have any insurance, I was pregnant at the time and I ended up having a miscarriage. And I'm not sure of all of what you're talking about, what the benefits were.”

The other cited reasons for not participating involved a lack of need for the program (N=6) and a lack of convenience (N=1). For the lack of need, one enrollee asserted, “I mean right now I am, I don't like, I had kids but now I don't have kids, so yeah.” For the enrollee discussing a lack of convenience, they stated, “I was trying to change my Medicaid so I can go to North Florida instead of Shands.” Four enrollees reported actually using the services, thus, they were incorrectly classified as not participating. One of these enrollees exclaimed, “I did use the services, I used it to get my birth control.”

Enrolled and participated

Of the twenty-five (25) enrollees that enrolled and participated, they were asked the reasons for participation. The most commonly cited reason entailed the need to use it for their current or past pregnancy (N=8). One enrollee stated, “I just went for the check-up but did not use for any means of prevention and ended up pregnant and used it for prenatal.” The second most commonly cited reason was the need for birth control (N=6). One enrollee stated, “The reason was because I wanted to get birth control after my daughter was born.” Additional reasons cited include financial considerations (N=4; e.g., “You guys offer free benefits, and most of the providers I've already had weren't as good as the one I'm enrolled in now.”) and promoting their health (N=1; e.g., “For health.”). Additionally, four enrollees mentioned being unaware of their participation in the program stating, “I don't know what plan you're talking about.”

RQ7: How do FPW enrollees utilize covered health services?

Table 7 presents the numbers and participation rates of enrollees that used at least one covered service by covered service category and enrollee year.

Table 7. Utilization of Covered Services by FPW Enrollees, DY24

Covered Service	Enrollee Year				Total	
	1st		2 nd			
	N	%*	N	%*	N	%**
Any Received	289	5.3%	5,400	11.6%	5,689	10.9%
Contraception	87	1.6%	1,950	4.2%	2,037	3.9%
STD Screening	104	1.9%	2,172	4.6%	2,276	4.4%
Cancer Screening	17	0.3%	537	1.1%	554	1.1%
Other***	264	4.9%	4,658	10.0%	4,922	9.4%

*Participation rates are based on total first- and second-year enrollees (5,422 and 46,747, respectively).

**Participation rates are based on total enrollees (52,169).

***Other services category contains CPT codes that are services not categorized as contraceptive, STD, or cancer screening services from the “Medicaid Family Planning Waiver Services CPT Codes and ICD-10 Diagnosis Codes” document provided by the Agency.

The overall participation rate, defined as the number of enrollees that used at least one covered service as a proportion of total enrollees for a given DY, is 10.9%. The participation rate of first-year enrollees, defined as the number of first-year enrollees that used at least one covered service as a proportion of total first-year enrollees for a given DY, is 5.3%. The participation rate of second-year enrollees is 11.6%. The most commonly used services in DY24 was STD screening (4.4%), followed by contraceptive services (3.9%),

and then cancer screening (1.1%). Slightly over 9% of enrollees used some other service that was provided through the FPW program.

RQ8: What gaps in coverage are experienced by FPW enrollees over time?

Table 8.1 shows the total number of FPW enrollees by number of years enrolled. There were 24,512 DY24 enrollees, and among these enrollees, 8.42% (2,065 individuals) only had coverage during their first 12 months, while 91.58% (22,447) maintained coverage during their second year of eligibility. Note that the sample of FPW enrollees is limited to individuals with at least 6 consecutive months of enrollment; therefore, individuals with only 1-5 months of enrollment are excluded (n=436).

Table 8.1: First and Second Year FPW Enrollment in DY24

Enrollment	DY24 Enrollees
First Year Only	2,065 (8.42%)
Second Year	22,447 (91.58%)
Total	24,512 (100%)

Note: Second year includes individuals with more than 12 months of enrollment but may not be a full 24 months of enrollment. “First year only” includes individuals with 6-12 months of enrollment, and “second year” includes individuals with more than 12 months enrollment.

Table 8.2 shows the total number of women who maintained coverage beyond the first year, broken down by those who lost coverage after two years, and those who maintained coverage beyond 2 years. Among the 22,447 DY24 women who were enrolled beyond the first year, 30.27% (6,794 individuals) lost coverage after two years.

Table 8.3 looks at gaps in FPW coverage between enrollment spans. Among the enrollees, 834 individuals had a prior enrollment span in the last 5 years. The average length of time between prior enrollment ending and DY24 enrollment beginning was 7.19 months and ranged from 1 to 28 months.

Table 8.2: Enrollees who Lose Coverage after Two Years in DY24, among Individuals Enrolled Beyond 1 Year

Enrollment	DY24 Enrollees
Lose Coverage after 2 Years	6,794 (30.27%)
Maintain Coverage beyond 2 years	15,653 (69.73%)
Total	22,447 (100%)

Note: The number of individuals enrolled beyond 1 year includes individuals with more than 12 months of enrollment but may not be a full 24 months of enrollment. Those who maintain coverage beyond 2 years have more than 24 months of consecutive enrollment.

Table 8.3: Average length of time between FPW enrollees’ most recent enrollment period and the previous enrollment period (limited to previous 5 years)

DY	N	Mean	Std Dev	Min	Max
DY24	834	7.19	5.40	1	28

Note: only individuals who had a prior enrollment span and had a gap in coverage are included in N.

RQ9: Are FPW enrollees satisfied with services?

The primary data source for research question 9 is the responses to the quantitative telephone-based surveys completed by FPW enrollees who used services during DY24 (N=300).

Enrollee Awareness of Enrollment

Within the qualitative interview, one screening question probed enrollees whether they were aware of being enrolled in the FPW program. Eighty-five percent (85%) reported being unaware of their enrollment into the program (N=254). Of the rest, only 12% (N=36) reported being aware of their enrollment into the program, while others either responded by reporting they “don’t know” whether or not they were aware of being enrolled (N=5) or by refusing to participate (N=5). Thus, an overarching theme gleaned from these interviews was the lack of awareness of enrollment into the FPW program.

Enrollee Satisfaction

In the qualitative interviews, FPW enrollees were asked to report their level of satisfaction with the types of services offered to through the FPW. There were 5 individuals that reported either not having used any family planning services or not being aware of their enrollment. Of the rest that responded to this question

(N=29), nearly all of them (97%; N=28) reported being satisfied (i.e., either “Satisfied” or “Very Satisfied”) with the types of services offered. Additionally, FPW enrollees were asked to report their level of satisfaction with the information and customer service provided to them regarding the FPW program. Of those that reported receiving information and customer service, a vast majority of enrollees (90%; N=26) reported being satisfied with the information and customer service provided to them regarding the FPW program.

In the qualitative interviews, FPW enrollees were asked to specify whether they received any of three types of services: contraceptive care, sexually transmitted disease (STD) testing, and cervical cancer screening. Of those who responded to the question, 80% (N=24) reported receiving contraceptive care, 40% (N=12) reported receiving STD testing and 40% (N=12) reported receiving cervical cancer screening. Additionally, 19% (N=5) of people reported either not knowing what services they received or refused to provide information about the services they received.

In the qualitative interviews, FPW enrollees were asked to report their level of satisfaction with three types of services: contraceptive care, sexually transmitted disease (STD) testing, and cervical cancer screening.

Of the individuals that responded to these questions, all of them reported being satisfied (i.e., either “Satisfied” or “Very Satisfied”) with contraceptive care (N=24), STD testing (N=12), and cervical cancer screening (N=12). The results of the enrollee satisfaction among those who reported receiving services are displayed in Table 1.

Table 9: Enrollee Satisfaction Survey Quantitative Results for DY24

Response Category	Satisfaction Category		
	Contraceptive care (n=24)	STD Testing (n=12)	Cervical Cancer Screening (n=12)
	% (n)	% (n)	% (n)
Very Satisfied	63 (15)	75 (9)	67 (8)
Satisfied	37 (9)	25 (3)	33 (4)
Dissatisfied	0 (0)	0 (0)	0 (0)
Very Dissatisfied	0 (0)	0 (0)	0 (0)

Enrollee Ease of Access to Services

In the qualitative interviews, FPW enrollees were asked to report the ease in which they were able to access family planning services. A few individuals (17%; N=6) reported not attempting to access the family planning services. Of those that attempted to access the family planning services and responded (N=30), a vast majority of them (90%; N=27) reported it was easy to access the family planning services (i.e., responded “Very easy” or “Somewhat easy” to the question).

Enrollee Recommendations for Florida Medicaid

In the qualitative interviews, FPW enrollees were asked to provide recommendations for to Florida Medicaid for improving access or other aspects of the program. A total of 8 individuals responded to this question. Of these individuals, a slight majority (38%; N=3) provided a positive appraisal of the program with no suggestions for improving the program (e.g., “I like the program.”). The rest of the responses fell under the following thematic categories of suggestions for improvement:

- 1) Providers (N=3) Defined by a need for greater provider supply (e.g., “to have more providers available.”), having more providers accept the service (e.g., “hope more doctors would accept it...once you're in a provider (sic) it's (sic) great.”), or access to a greater variety of providers (e.g., “...more access to different doctors instead of just the healthcare department doctors”).
- 2) Communication (N=3) Defined by a need to improve frequency of outreach (e.g., “Would recommend more communications for those who are enrolled.”), engage in follow-up with enrollees after receiving services (e.g., “follow through with coverage. Concerned about cancer screening and would like continued testing and follow up. Wants to know what is covered after the screening.”) and developing a centralized website for relevant information about the program (e.g., “online portal.”).

RQ10: What strategies are being used by the Department of Health to increase FPW participation rates?

The primary data source for research question 10 is the responses to the qualitative surveys completed by DOH frontline staff. These surveys with DOH staff were not repeated this year. Results presented here are from last year's survey. Among the nine DOH employees who participated in the survey, two of them stated their agency does not use any strategies to increase FPW participation rates. From the remaining responses (n=7), the strategies used by DOH employees to increase FPW participation rates include the following:

employee incentivization (i.e., conducting a competition for identifying and enrolling the most individuals into the program), active external outreach (i.e., direct communication with community partners to facilitate the process for potential enrollees), passive external outreach (i.e., using flyers and postings in outside clinics and agencies such as Women, Infants, and Children (WIC), dental and immunization clinics), pre-appointment patient eligibility review (i.e., using systems such as FLMMIS Medicaid and Department of Labor’s Suntax to determine eligibility of individuals), pre-appointment and in-appointment information sharing (i.e., distributing FPW materials or information before or during the appointment) and following up with potential enrollees post-appointment concerning application materials. Excerpts associated with each of these strategies are displayed in Table 10.1.

Table 10.1: Selected Quotes from Strategies (N=9)

Strategy	Quote(s)
Employee Incentivization	“In the past we've had competitions as to who can identify and obtain the most potentially eligible FPW applications.”
External Outreach- Active	“Reached out to other community partners and set up a fax-in system for the FPW applications.”
External Outreach- Passive	“We have signage posted in other departments such as WIC, Dental and Immunization clinics.”
Pre-appointment Patient Eligibility Review	<ol style="list-style-type: none"> 1. “We also review all schedules for patients coming in to determine if they would be eligible for FP Waiver program and enter a comment in the computer system to explain the program and provide the patient with an application.” 2. “The appointment schedules are checked at least a day in advance and all women presenting have FLMMIS Medicaid computer system checked for potential FPW eligibility.” 3. “Each and every time the client comes in for any services, we check to see if they qualify for FP Waiver and encourage them to fill out paperwork and return to office.” 4. “Use Department of Labor Suntax and provide other assistance when possible to verify income.” 5. “Check Medicaid on all clients and give application to anyone who has had Medicaid in the last year.”
Pre-appointment and In-appointment Information Sharing	<ol style="list-style-type: none"> 1. “Those who've lost their Medicaid within the past 2 years are sent a letter with enclosed application regarding the FPW Medicaid Program.” 2. “Clients who come in for family planning services are informed of FPW Medicaid program by clinic FP provider and given an application.” 3. “Clients are educated when making appointments on needed documents to enroll in Family Planning wavier program they are also instructed again at reminder call for appointment.”
Follow Up	<ol style="list-style-type: none"> 1. “Sending letters and application.” 2. “Also, I call the clients that were on the first year FP Waiver and notify them of the second if qualified.” 3. “We also follow-up with clients two weeks after they complete application if they are missing documents to process application.”

Conclusions, Positive Outcomes, Challenges, and Lessons Learned

One positive finding that remains consistent among those women who used FPW services was that they were overwhelmingly satisfied with those services and indicated that the services were easy to access.

Some challenges were also observed:

- Enrollment rates among women eligible for the FPW program remain very low, with 17.2% of eligible women enrolling in the program in DY24. Additionally, only 10.9% of FPW enrollees used any FPW services in DY24. While the types of services provided through the FPW program have been shown to be effective at producing positive outcomes, the impact of the program is greatly reduced because of low enrollment and participation rates. The majority of women who were interviewed indicated that they were unaware of the program, including women who used services provided through the FPW program.
- Overall enrollment in the FPW program was significantly lower for this DY compared to previous DYs due to changes in Medicaid eligibility policy as a result of the COVID-19 pandemic. Individuals were allowed to maintain their Medicaid coverage during the pandemic. As a result, fewer women lost Medicaid coverage during DY24, and thus, fewer women were eligible for the FPW program which is provided to women who recently lost their Medicaid coverage.
- The proportion of low weight births and pre-term births were both slightly larger for the FPW enrollees in DY24. For DY24 FPW enrollees, 10.82% of births were considered low birth weight, compared with 9.78% for the FPW non-enrollees. The rate of pre-term births for the FPW enrollees in DY24 was 12.59%, compared with 11.24% for the FPW non-enrollees.
- Challenges primarily stemmed from managing and using the data to properly classify enrollees vs. non-enrollees. More specifically, enrollee data had many cases with multiple, short enrollment spans, that often overlapped. We were able to overcome this challenge by using the multiple dates to identify the full enrollment span.

There was some ambiguity on whether to use the estimated clinical conception date or the date of birth to classify the demonstration year of births as the span of a pregnancy can last through parts of two demonstration years. For RQ4, date of birth was used because it gave the fewest missing cases, and the question is focused specifically on the birth outcomes.

Lessons Learned and Recommendations

Given the consistent finding of lack of knowledge of the FPW program, both among eligible women who do not enroll and enrolled women, future activities should focus on increasing enrollment and enrollee participation rates in the FPW program. Activities associated with the eligibility determination process were recently transferred from the DOH to the DCF. Because the DCF currently does all eligibility determinations for Florida's Medicaid program, FPW eligible women are now automatically enrolled for the initial 12-month period as well as the second 12-month period if no additional information is needed to determine eligibility. Thus, most eligible women will be automatically enrolled for the full 24-month period, improving enrollment rates; however, this strategy is unlikely to increase awareness or participation in the FPW program. Addressing this issue is important, particularly given the anticipated large increase in women becoming eligible for the program when the public health emergency ended in April 2023 which likely resulted in many women losing Medicaid coverage. As indicated in the Healthy People 2030 initiative, increased awareness of family planning services is needed and can be achieved through public outreach and improved collaboration between health care providers. Marketing of the program through social media and other platforms such as television, radio, and billboards has successfully increased awareness of public health programs, as well as additional mailings and emails by the Agency to inform eligible and/or enrolled women of the program and benefits of the program. The Agency should also attempt to collaborate more with providers of FPW services to encourage participation as well as using strategies identified by some of the DOH clinics, including outreach, education, and proactively engaging with women to get them enrolled in the FPW program. Additionally, DY24 represents the first full year of the COVID-19 pandemic, which greatly reduced the number of women eligible for the FPW program as women were able to retain their Medicaid coverage through the public health emergency. As a result, findings for DY24 were often different compared to previous demonstration years. It will be important to continue to monitor outcomes of the program during the course of the pandemic as well as when the public health emergency ended in April of 2023.

References

- Centers for Disease Control and Prevention (CDC). (2022). Prevalence of selected maternal and child health indicators for all Pregnancy Risk Assessment Monitoring System (PRAMS) Sites, 2016-2020. Accessed August 4, 2023 at <https://www.cdc.gov/prams/prams-data/mch-indicators/states/pdf/2020/All-Sites-PRAMS-MCH-Indicators-508.pdf>.
- Centers for Medicare & Medicaid Services. (2014). *Centers for Medicare & Medicaid Services special terms and conditions*. Florida Medicaid Family Planning Waiver. Approval period January 1, 2015-December 31, 2017. Retrieved from http://www.ahca.myflorida.com/medicaid/Family_Planning/pdf/FL_FPW_Extension_CMS_Approved_STCs_12-29-14.pdf
- Centers for Medicare & Medicaid Services. (2017). MAGI Conversion Plans and Results. Retrieved from <https://www.medicaid.gov/affordable-care-act/eligibility/magi-conversion-plan/index.html>
- Florida Agency for Health Care Administration. (2015). *Florida Medicaid Family Planning Waiver Program evaluation plan: 2015-2017*.
- Florida Agency for Health Care Administration. (2016). State of Florida Contract No. MED184.
- Florida Agency for Health Care Administration. (2017). AHCA Contract No. MED184. Amendment No. 1.
- Florida Agency for Health Care Administration. (2020). Medicaid Family Planning Waiver Services CPT Codes and ICD-10 Diagnosis Codes. https://ahca.myflorida.com/Medicaid/Family_Planning/pdf/Family_Planning_Covered_Codes_List_2020-01.pdf
- Florida Department of Health (DOH). (2017). <http://www.floridahealth.gov/diseases-and-conditions/tuberculosis/tb-professionals/tb-professional-materials.html>
- Healthy People 2030 initiative (<https://health.gov/healthypeople/objectives-and-data/browse-objectives/family-planning>)
- National Vital Statistics System, National Center for Health Statistics, Centers for Disease Control and Prevention (CDC). Births: final data for 2021. CDC; 2023. Accessed August 4, 2023. <https://www.cdc.gov/nchs/data/nvsr/nvsr72/nvsr72-01.pdf>
- Qualtrics software, Version October 2017 of Qualtrics. Copyright © 2015 Qualtrics. Qualtrics and all other Qualtrics product or service names are registered trademarks or trademarks of Qualtrics, Provo, UT, USA. <http://www.qualtrics.com>
- University of Florida Family Data Center. (2016). MED145 Deliverable 2.4 DY16 Final Report June 24, 2016.

University of Florida Family Data Center. (2013). Maternal and Infant Health Status Indicators for Florida, 1997 – 2001 report.
http://familydata.health.ufl.edu/files/2013/02/maternal_and_infant_health_status_indicators_1997-2001.pdf

Appendices

Appendix A: Specific Methods for Each Research Question

For research question 1 (What differences in recipient demographic characteristics exist between FPW enrollees and eligible women who do not enroll in FPW per DY?), Medicaid eligibility files were used to identify women who are eligible for the FPW program as well as women enrolled in the FPW program. Medicaid eligibility files were also used to identify demographic characteristics for eligible and enrolled women, and descriptive statistics of the demographic characteristics of FPW enrollees as well as eligible women who did not enroll in the FPW program were calculated for DY24. Eligible women were identified as women 14 years of age up through and including women who are 55 years of age who lost Medicaid eligibility for any reason in the two years prior to the DY being examined. FPW enrollees were identified from Medicaid eligibility files.

For research question 2 (What are the interbirth intervals for FPW enrollees compared to eligible women who do not enroll in the FPW program who gave birth during the study period?), Medicaid claims and eligibility data, as well as vital statistics birth certificate data, were merged and used to compare the average interbirth intervals (IBI) in number of months for FPW enrollees and eligible women who do not enroll in the FPW program. The IBI is the time between the first birth that occurred during the DY being examined and the second live birth observed with available birth certificate data. IBI rates were compared between FPW enrollees and eligible women who are not enrolled in the FPW program using descriptive statistics for each DY.

For research question 3 (What is the rate of unintended pregnancies for FPW enrollees and eligible women who do not enroll in the FPW program per DY?), Medicaid claims and DOH data were merged. Unintended pregnancies were identified using questions 5 and 14 on the Healthy Start Prenatal Risk Screen (see Appendix E) related to pregnancy intendedness. Unintended pregnancy rates were calculated as the number of unintended pregnancies for FPW enrollees divided by the total number of births by FPW enrollees. This rate was also calculated for eligible women who do not enroll in the FPW program and compared to the rate for FPW enrollees using descriptive statistics for each DY.

For research question 4 (What is the rate of low birth weight and preterm births for FPW enrollees compared to women who are eligible but do not enroll in the FPW program?), Medicaid eligibility and claims data were merged with Vital Statistics birth certificate data and hospital discharge data to identify low birth weight births, defined as a baby that is less than 2,500 grams at birth, and preterm births, defined as a birth at

less than 37 weeks gestation. The rate of preterm births and rates of low birth weight were calculated for both FPW enrollees and eligible women who do not enroll in the FPW program by dividing the total number of preterm or low birth weight births in a DY by the total number of births by each group in the DY. Preterm and low birth weight rates were compared between FPW enrollees and eligible women who are not enrolled in the FPW program using descriptive statistics for each DY.

For research question 5 (Is the FPW program achieving cost savings by lowering the birth rate?), the difference in the birth rate between FPW enrollees and eligible women who do not enroll in the FPW program were used to calculate the number of births averted. Total cost savings were calculated as the total number of births averted times the average cost of the birth, which included the cost of the birth as well as the Medicaid costs for the infant during the first year of life, minus the cost of administering the FPW program. This was calculated for each DY.

For research question 6 (What are the reasons that women eligible for the FPW program choose to enroll or not enroll in the FPW program and the reasons women enrolled in the FPW program do not participate?), qualitative interviews were administered to identify common themes. Separate qualitative interviews were administered to eligible women who do not enroll in the FPW program and FPW enrollees who do not use FPW services (non-participants). Eligible women who do not enroll were asked for reasons why they did not enroll. FPW non-participants were asked why they did not use any FPW services. The samples (FPW enrollee non-participants, eligible women who do not enroll in the FPW program) for the qualitative interviews were identified from Medicaid eligibility and claims data. A total of 25 women were interviewed from each group or until saturation was achieved, whichever came first. Interviews took place in SFY2020-2021. Interviews will not be repeated in future DYs as the evaluation team does not expect responses to change from year to year. Common themes were identified using a grounded theory approach utilizing NVivo qualitative data analysis software. Draft survey questions are included in Appendix B.

For research question 7 (How do FPW enrollees utilize covered health services?), Medicaid eligibility, enrollment, and claims data were used to assess enrollment rates, utilization rates (use of any service covered by FPW), contraceptive services utilization rates, cancer screening utilization rates, and sexually transmitted disease (STD) screening utilization rates for all FPW enrollees per DY. Overall utilization rates were also compared between first year FPW enrollees and second year FPW enrollees. FPW contraceptive care rates were calculated as the total number of FPW enrollees who use contraceptive services/total number of FPW enrollees. FPW cancer screening rates were calculated as the total number of FPW enrollees who use any

cancer screening services/total number of FPW enrollees. FPW STD screening rates were calculated as the total number of FPW enrollees who use STD screening services/total number of FPW enrollees. Each of these rates were calculated separately for each DY. The following algorithm was used to assign women as first or second year FPW enrollees as well as to a DY. First year enrollees are women who are within 12 months of their initial enrollment dates. Second year enrollees are women who are between 13-24 months of their initial enrollment dates. Service utilization was calculated based on the services that the enrollee used during either the first 12 months of enrollment or the second 12 months of enrollment, regardless of whether their service utilization during that year occurred over the course of two demonstration years. Women were assigned a demonstration year based on which of the demonstration years had 6 or more months of enrollment.

For research question 8 (What gaps in coverage are experienced by FPW enrollees over time?), Medicaid enrollment and eligibility data were used. The following measures will be calculated for each DY and used to assess coverage experience: (1) total number of FPW enrollees who are only enrolled for the first year/total number of FPW enrollees; (2) total number of FPW enrollees who are enrolled for the second year/total number of FPW enrollees; (3) average length of time between FPW enrollees' most recent enrollment period and the previous enrollment period (limited to the previous five years); and (4) total number of women who lose FPW coverage after the two year enrollment period.

For research question 9 (Are FPW enrollees satisfied with services?), satisfaction surveys were administered to FPW enrollees. Surveys will be administered during each DY. FPW enrollees will be randomly selected and administered a telephone-based satisfaction survey (see Appendix B for satisfaction survey instrument). Surveys will be administered each year until 300 completed surveys are achieved. Surveys for DY24 were administered during the first quarter of CY2023. Descriptive statistics of survey responses will be used to summarize FPW enrollee experiences and satisfaction.

For research question 10, (What strategies are being used by the Department of Health to increase FPW participation rates?), qualitative interviews were administered to staff at all DOH clinics offering FPW services. Knowledgeable staff members were identified and asked what strategies are employed to increase use of FPW services. Interviews were administered during SFY2020-2021. These interviews will only take place during the first year of the evaluation. Common themes/strategies were identified using a grounded theory approach utilizing NVivo qualitative data analysis software. Interview questions are included in Appendix B.

Appendix B: Qualitative Surveys

Family Planning Waiver Satisfaction Surveys

You are currently enrolled in Florida's Family Planning Waiver program, which offers you access to family planning services including contraceptive services, cervical cancer screening services, and sexually transmitted disease screening services. We have been contracted with Florida's Agency for Health Care Administration to assess Family Planning Waiver enrollees' satisfaction with the services provided through the Family Planning Waiver program. You may refuse to answer any question and you may choose to end the survey at any time. None of your responses to the survey will be linked to you and will not impact your enrollment in the Family Planning Waiver program.

1. How satisfied are you with the types of services offered to you through the Family Planning Waiver program?
 - a. Very satisfied
 - b. Satisfied
 - c. Dissatisfied
 - d. Very Dissatisfied
 - e. I have not used any family planning services
 - f. I was not aware that I was enrolled in the Family Planning Waiver program (if selected, end survey)
2. How satisfied were you with the information and customer service provided to you about the Family Planning Waiver program?
 - a. Very satisfied
 - b. Satisfied
 - c. Dissatisfied
 - d. Very Dissatisfied
3. How easy was it to access these family planning services?
 - a. Very easy
 - b. Somewhat easy
 - c. Somewhat difficult
 - d. Very difficult
 - e. I did not attempt to access family planning services (if selected, exit survey)
4. Which of the following family planning services did you use? Please select all that apply.
 - a. Contraceptive care (e.g., contraception, contraceptive counseling/education)
 - b. Sexually transmitted disease testing (e.g., pap smears, pelvic exams)
 - c. Cervical cancer screening (e.g., pap smears, pelvic exams)
5. How satisfied were you with [insert name of FPW service used by respondent in question 4]? (this question can be repeated up to 3 times depending on the number of types of FPW benefits used by the respondent)
 - a. Very satisfied
 - b. Satisfied
 - c. Dissatisfied
 - d. Very Dissatisfied
6. Do you have any recommendations for improving access or other aspects of the program?

Qualitative Survey of Reasons Why Eligible Women Do Not Enroll in the Family Planning Waiver Program

You are currently eligible for Florida’s Family Planning Waiver program, which offers you access to family planning services including contraceptive services, cervical cancer screening services, and sexually transmitted disease screening services. We have been contracted with Florida’s Agency for Health Care Administration to assess why women who are eligible for the Family Planning Waiver program are not enrolled. You may refuse to answer any question and you may choose to end the survey at any time. None of your responses to the survey will be linked to you and will not impact your eligibility for the Family Planning Waiver program.

1. Although you are eligible for the Family Planning Waiver program, you have not chosen to enroll in the program. Could you please provide the reasons why you have chosen not to enroll in this program?

Qualitative Survey of Reasons Why Enrolled Women Do Not Participate in the Family Planning Waiver Program

You are currently enrolled in Florida’s Family Planning Waiver program, which offers you access to family planning services including contraceptive services, cervical cancer screening services, and sexually transmitted disease screening services. We have been contracted with Florida’s Agency for Health Care Administration to assess why women who are enrolled in the Family Planning Waiver program choose not to use any of the family planning services provided through the program. You may refuse to answer any question and you may choose to end the survey at any time. None of your responses to the survey will be linked to you and will not impact your enrollment in the Family Planning Waiver program.

1. Although you are enrolled in the Family Planning Waiver program, you have not chosen to participate in the program by using any of the covered services. Could you please provide the reasons why you have chosen to not participate in the program?

Qualitative Survey of DOH Clinic Staff's Strategies to Increase Family Planning Waiver Program Participation Rates

Use of family planning services among women enrolled in Florida's Family Planning Waiver program are very low. We have been contracted with Florida's Agency for Health Care Administration to assess the strategies being used by Department of Health clinics to increase participation rates in the Family Planning Waiver program by enrolled women. You may refuse to answer the survey and end the survey at any time. None of your responses to the survey will be linked to you. All results of the survey will be presented anonymously.

1. What strategies are being used by your clinic to increase Family Planning Waiver program participation rates among Family Planning Waiver enrollees?

Appendix C: Healthy Start Prenatal Screen



Help your baby have a healthy start in life!



Please answer the following questions to find out if anything in your life could affect your health or your baby's health. Your answers are **confidential**. You may qualify for free services from the Healthy Start Program or the Healthy Families Program, no matter what your income level is! (Please complete in ink.)*

Today's Date: _____

	YES	NO
1. Have you graduated from high school or received a GED?	<input type="checkbox"/>	<input type="checkbox"/> ₁
2. Are you married now?	<input type="checkbox"/>	<input type="checkbox"/> ₁
3. Are there any children at home younger than 5 years old?	<input type="checkbox"/>	<input type="checkbox"/>
4. Are there any children at home with medical or special needs?	<input type="checkbox"/>	<input type="checkbox"/>
5. Is this a good time for you to be pregnant?	<input type="checkbox"/>	<input type="checkbox"/>
6. In the last month, have you felt down, depressed or hopeless?	<input type="checkbox"/> ₁	<input type="checkbox"/>
7. In the last month, have you felt alone when facing problems?	<input type="checkbox"/>	<input type="checkbox"/>
8. Have you ever received mental health services or counseling?	<input type="checkbox"/>	<input type="checkbox"/>
9. In the last year, has someone you know tried to hurt you or threaten you?	<input type="checkbox"/>	<input type="checkbox"/>
10. Do you have trouble paying your bills?	<input type="checkbox"/>	<input type="checkbox"/>

11. What race are you? Check one or more.

White Black Other _____

12. In the last month, how many alcoholic drinks did you have per week?

_____ drinks ₁ did not drink

13. In the last month, how many cigarettes did you smoke a day? (a pack has 20 cigarettes)

_____ cigarettes ₁ did not smoke

14. Thinking back to just before you got pregnant, did you want to be.....?

pregnant now pregnant later ₁ not pregnant

15. Is this your first pregnancy?

₂ Yes No If no, give date your last pregnancy ended:
Date: (month/year) _____

16. Please mark any of the following that have happened.

- ₃ Had a baby that was not born alive
 ₃ Had a baby born 3 weeks or more before due date
 ₃ Had a baby that weighed less than 5 pounds, 8 ounces
 None of the above

PATIENT INFORMATION	Name: First _____ Last _____ M.I. _____ Social Security Number: _____ Date of Birth (mo/day/yr): _____ 17. Age: <input type="checkbox"/> ₁ <18
	Street address (apartment complex name/number): _____ County: _____ City: _____ State: _____ Zip Code: _____
	Prenatal Care covered by: <input type="checkbox"/> Medicaid <input type="checkbox"/> Private Insurance _____ <input type="checkbox"/> No Insurance <input type="checkbox"/> Other _____
	Best time to contact me: _____ Phone #1 _____ Phone #2 _____

I authorize the exchange of my health information between the Healthy Start Program, Healthy Start Providers, Healthy Start Coalitions, Healthy Families Florida, WIC, Florida Department of Health, and my health care providers for the purposes of providing services, paying for services, improving quality of services or program eligibility. This authorization remains in effect until revoked in writing by me.

Patient Signature: _____ Date: _____

Please initial: _____ Yes _____ No I also authorize specific health information to be exchanged as described above, which includes any of my mental health, TB, alcohol/drug abuse, STD, or HIV/AIDS information.

* If you do not want to participate in the screening process, please complete the patient information section only and sign below:

Signature: _____ Date: _____

PROVIDER ONLY	LMP (mo/day/yr): _____ EDD (mo/day/yr): _____	18. Pre-Pregnancy: Wt: _____ lbs. Height: _____ ft. _____ in. BMI: _____	<input type="checkbox"/> ₁ < 19.8 <input type="checkbox"/> ₂ > 35.0
	Provider's Name: _____ Provider's ID: _____	19. Pregnancy Interval Less Than 18 Months? <input type="checkbox"/> N/A <input type="checkbox"/> No	<input type="checkbox"/> ₁ Yes
	Provider's Phone Number: _____ Provider's County: _____	20. Trimester at 1st Prenatal Visit? _____	<input type="checkbox"/> ₁ 2nd
	Healthy Start Screening Score: _____	Check One: <input type="checkbox"/> Referred to Healthy Start. If score <6, specify: _____ <input type="checkbox"/> Not Referred to Healthy Start.	<input type="checkbox"/> ₂ Yes
	Provider's/Interviewer's Signature and Title _____		Date (mo/day/yr) _____

DH 3134, 04/08, stock number 5744-100-3134-7

Distribution of copies: WHITE & YELLOW—County Health Department in county where screening occurred
PINK—Retained in patient's record
GREEN—Patient's Copy

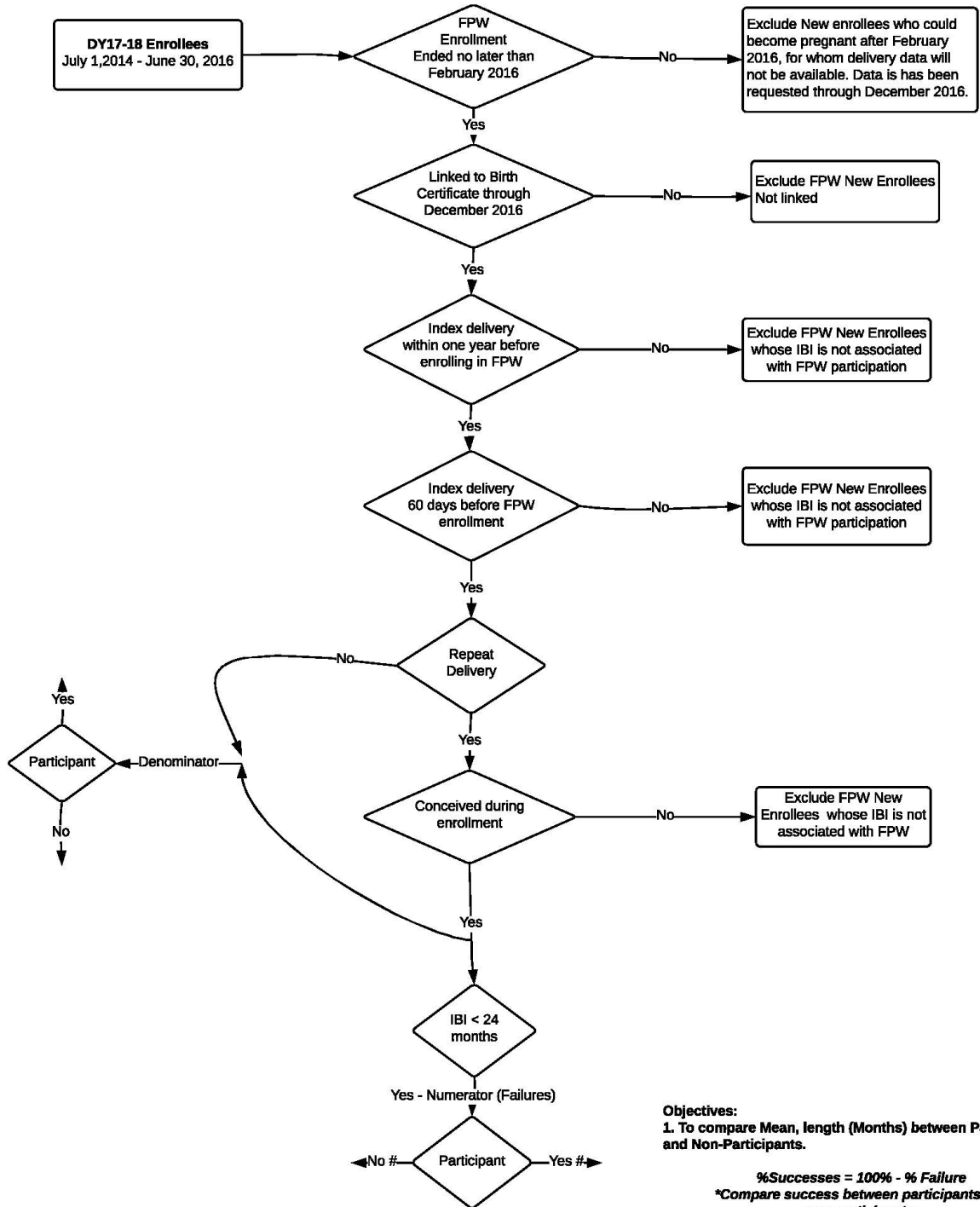
Appendix D: Interbirth Interval (IBI) Methodology and Flowchart

To measure the impact of the FPW in increasing the child spacing interval through effective contraceptive use, the research team compared the average Interbirth Intervals (IBI) of Enrollees and FPW Eligible Non-Enrollees in the current waiver period. For this report, the research team conducted comparisons of average IBI length by enrollment status.

1. Inclusion Criteria for enrollees and eligible non-enrollees for IBI
 - a. For DY24 enrollees, FPW enrollment ended no later than March 2021
 - b. Linked to birth certificate data through December 2021
 - c. Conceived after enrolling in FPW
 - d. Conceived no later than one year after the end of FPW enrollment
 - e. Previous delivery within one year before enrolling in FPW.
2. Exclusion Criteria for IBI
 - a. Exclude enrollees who could become pregnant after March 2021 for whom 2021 birth certificate data is not available
 - b. Exclude enrollees not linked to a birth certificate
 - c. Exclude enrollees whose IBI cannot be extended by FPW services
 - d. Exclude FPW non- enrollees who received Family Planning Services through Title X (Planned Parenthood).

Inclusion/Exclusion criteria for Interbirth Interval (IBI) Analysis

Inclusion/Exclusion criteria for Interbirth Interval (IBI) analysis (SUCCESS)

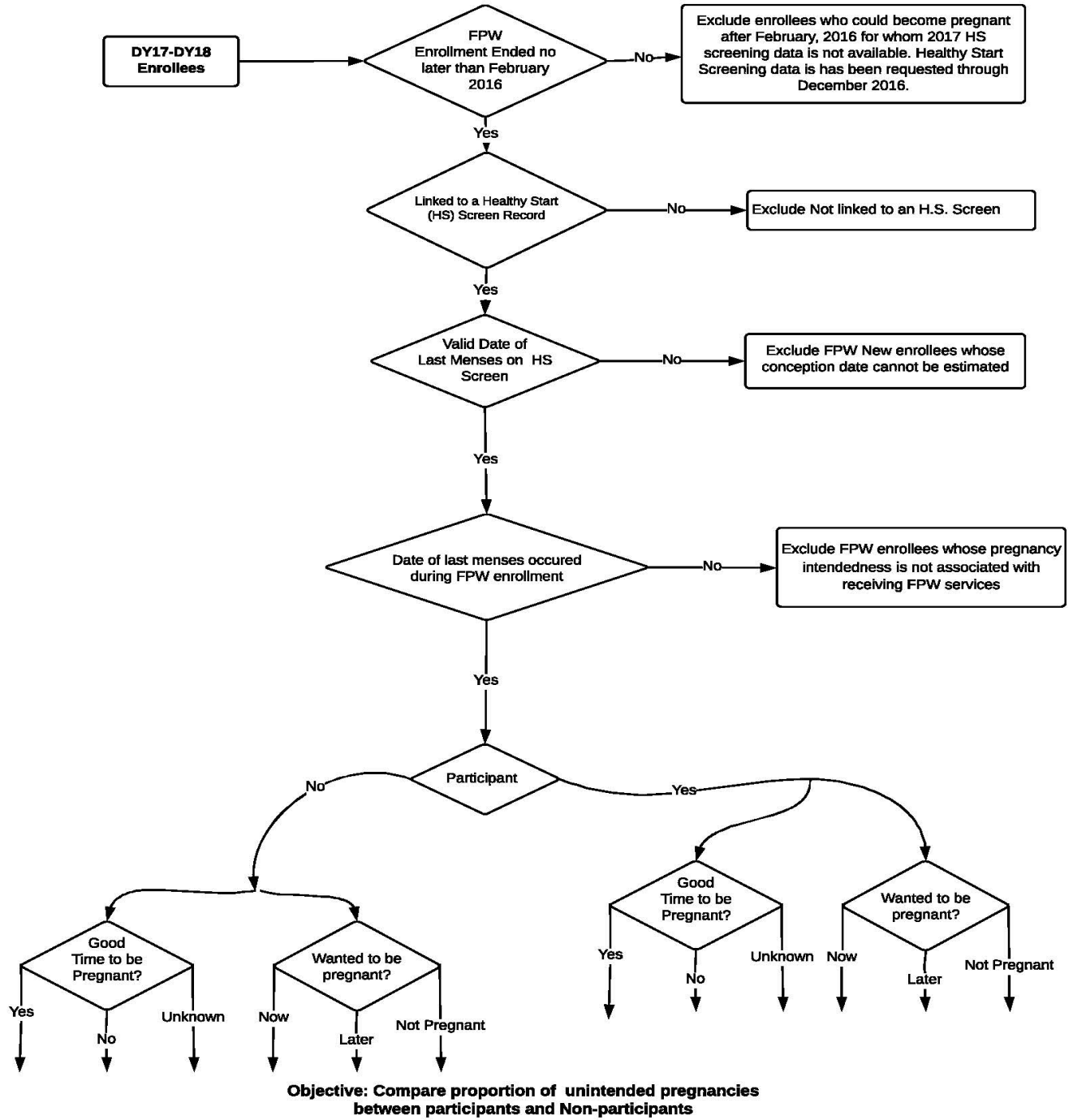


Appendix E: Unintended Pregnancies Methodology and Flowchart

To measure the impact of the FPW in reducing the number of unintended pregnancies through provision of Family Planning services, the research team assessed whether there was a difference in the rate of unintended pregnancies during DY20 among Participants and Non-Participants. The research team employed the following steps for determining and comparing the rate of unintended pregnancies between participants and non-participants:

1. Identify DY20 Participants who meet the following three conditions:
 - a. Are linked to at least one Healthy Start Prenatal Risk Screen record dated July 1, 2017 through June 30, 2019.
 - b. Their date of last menses as reported on at least one linked Healthy Start Prenatal Risk Screen record is not missing.
 - c. Their date of last menses as reported on at least one linked Healthy Start Prenatal Risk Screen record occurred on or after their date of enrollment and on or before the end of the waiver period, June 30, 2024.
2. Among Participants who meet the three conditions in Step 1, identify DY20 Participants (received at least one FPW service during enrollment with a date of service on or before the end of the waiver period, June 30, 2024) who also meet the following condition:
 - a. Their date of last menses as reported on at least one linked Healthy Start Prenatal Risk Screen record occurred on or after their first FPW service.
3. Among Participants who meet the three conditions in Step 1 and do not meet the first condition of Step 2 (did not receive FPW services during enrollment with a date of service that is on or before the end of the waiver period, June 30, 2024) identify those who also meet the following condition:
 - a. Did not receive a family planning service through a different Medicaid delivery system than the FPW while enrolled in the FPW.

Inclusion/Exclusion criteria for Unintended Pregnancies Analysis



Appendix F: Cost Saving Methodology

To estimate the overall cost-savings associated with implementing the FPW, the research team followed the process outlined below:

1. The research team calculated births averted. The term births averted refers to the difference in the observed birth rate of women enrolled in FPW program in a given demonstration year versus the expected birth rate of women enrolled in the FPW program if they instead had the birth rate of women eligible for the FPW program who did not enroll.
2. The research team calculated the average delivery and first-year costs by summing all amounts either FFS claims and/or MMA claims in a given demonstration year and dividing by the total number of births. The summed costs are for both the cost of the birth and the costs of the infant that occurred from the date of birth through the child's first birthday.
3. The research team multiplied the average annual costs in a given demonstration year by the number of births averted, to arrive at the annual gross savings to Medicaid of the FPW program in a given demonstration year.
4. The research team determined how much the Agency spent in a given demonstration year to provide family planning services.
5. The research team deducted the cost to the Agency of providing family planning services in a given demonstration year from the gross savings calculated in step three, above, to arrive at the net savings to Medicaid of implementing the FPW program in a given demonstration year.

Appendix G: Procedure Codes for All FPW Services

CPT Code	Description of Covered Codes
Evaluation and Management	
99384FP	Family planning new visit
99385FP	
99386FP	
99394FP	Family planning established visit
99395FP	
99396FP	
99401FP	HIV counseling (pre-test) 15 min
99402FP	HIV counseling (post-test) 30 min
99403FP	Family planning counseling visit
99211FP	Family planning supply visit
99201	Extended family planning services-new patient (treatment of STI)
99211	Extended family planning services-established patient (treatment of STI)
Medication/Device	
J1050	Injection medroxyprogesterone acetate (Depo-Provera)
J7300	Intrauterine copper device (Paraguard)
J7301	Levonorgestrel-releasing intrauterine contraceptive system (Skyla), 13.5 mg
J7297	Levonorgestrel-releasing intrauterine contraceptive system (Liletta), 52 mg
J7298	Levonorgestrel-releasing intrauterine contraceptive system (Mirena), 52 mg
J7307	Etonogestrel implant system, including implant and supplies (Nexplanon)
J7296	Levonorgestrel-releasing intrauterine contraceptive (Kylenna), 19.5 mg
Anesthesia, Surgical and Radiology	
00840	Anesthesia for Intraperitoneal procedures in lower abdomen including laparoscopy
00851	Anesthesia for tubal ligation/transection
11976	Removal of implantable contraceptive capsules
11981	Insertion, non-biodegradable drug delivery implant
11982	Removal, non-biodegradable drug delivery implant
11983	Removal with reinsertion, non-biodegradable drug delivery implant
57170	Diaphragm or cervical cap fitting with instructions
57410	Pelvic examination under anesthesia
57452	Colposcopy of the cervix
57454	Colposcopy with biopsy(s) of the cervix and endocervical curettage
57460	Colposcopy with loop electrode biopsy(s)
58300	Insertion of intrauterine device
58301	Removal of intrauterine device
58340	Catheterization and introduction of saline or contrast material for saline infusion for hysterosalpingography
58600	Ligation or transection of fallopian tube(s)
58615	Occlusion of fallopian tube(s) by device (e.g., band, clip, Falope ring)
58670	Surgical laparoscopy, with fulguration of oviducts (with or without transection)
58671	Surgical laparoscopy, with occlusion of oviducts by device (e.g., band, clip, or Falope ring)
74740	Radiological supervision and interpretation x-ray of uterine tubes and ovaries

CPT Code	Description of Covered Codes
76856	Ultrasound of pelvis, non-obstetric (to check placement of intrauterine devices)
76882	Ultrasound of extremity, limited, anatomic specific (to check for implantable contraceptive device)
	Laboratory
81000	Urinalysis, non-automated, with microscopy
81001	Automated, with microscopy
81002	Non-automated, without microscopy
81003	Automated, without microscopy
81005	Urinalysis; qualitative or semi-qualitative
81007	Urinalysis; bacteriuria screen, by kit
81015	Urinalysis; bacteriuria screen, microscopic only
81025	Urine pregnancy test, by visual color comparison
82947	Glucose; quantitative, blood
84702	Gonadotropin, chorionic (hCG); quantitative
84703	Gonadotropin, chorionic (hCG); qualitative
85007	Blood count; manual differential WBC count
85014	Hematocrit
85018	Hemoglobin
86255	Fluorescent antibody; screen, each antibody (HIV & herpes)
86382	Neutralization test, viral
86403	Rubella screen (IgG)
86580	Tuberculosis, intradermal
86592	Syphilis test; qualitative (e.g., VDRL, RPR, ART)
86593	Syphilis test; quantitative
86689	HTLV or HIV antibody, confirmatory test (western blot)
86694	Herpes simplex, non-specific type test
86695	Herpes simplex, type 1
86696	Herpes simplex, type 2
86701	Antibody; HIV-1
86702	Antibody; HIV-2
86703	Antibody; HIV-1 and HIV-2, single assay
86706	Hepatitis B surface antibody (HBsAb)
86707	Hepatitis Be antibody (HBeAb)
86762	Rubella titer
86780	Treponema pallidum
86803	Hepatitis C antibody
87070	Culture, bacterial, definitive; any other source (GC)
87075	Culture, bacterial, any source; anaerobic (isolation)
87081	Culture, bacterial, screening only (GC)
87086	Culture, bacterial, urine; quantitative, colony count
87088	Culture, bacterial, urine; quantitative colony count, with isolation and presumptive identification of each isolate
87110	Culture, chlamydia
87164	Dark field examination, any source, includes specimen collection

CPT Code	Description of Covered Codes
87205	Smear, primary source, with interpretation; Gram or Giemsa stain for bacteria, fungi, or cell types; (gonorrhea)
87206	Smear, primary source, with interpretation; (chlamydia)
87210	Smear, primary source, wet mount isolation, with stain
87252	Virus identification; tissue culture inoculation & observation
87270	Infectious agent antigen detection by immunofluorescent technique, chlamydia trachomatis
87273	Infectious agent antigen detection by immunofluorescent technique, herpes simplex virus type 2
87274	Infectious agent antigen detection by immunofluorescent technique, herpes simplex virus type 1
87340	Hepatitis B surface antigen (HBsAg)
87341	Hepatitis B surface antigen (HBsAg) neutralization
87350	Hepatitis Be antigen (HBeAg)
87390	HIV-1
87480	Candida species, direct probe technique
87481	Candida species, amplified probe technique
87490	Chlamydia trachomatis, direct probe technique
87491	Chlamydia trachomatis, amplified probe technique
87510	Gardnerella vaginalis, direct probe technique
87511	Gardnerella vaginalis, amplified probe technique
87516	Hepatitis B virus, amplified probe technique
87520	Hepatitis C virus, direct probe technique
87521	Hepatitis C virus, amplified probe technique
87522	Hepatitis C virus, quantification
87528	Herpes simplex virus, direct probe technique
87529	Herpes simplex virus, amplified probe technique
87530	Herpes simplex, quantification
87534	HIV-1, direct probe technique
87535	HIV-1, amplified probe technique
87590	Neisseria gonorrhoeae, direct probe technique
87591	Neisseria gonorrhoeae, amplified probe technique
87592	Neisseria gonorrhoeae, quantification
87623	HPV low-risk type detection test
87624	HPV high-risk type detection test
87660	Trichomonas vaginitis, direct probe technique
87661	Trichomonas vaginitis, amplified probe technique
87810	Infectious agent antigen detection by immunoassay with direct optical observation; chlamydia trachomatis
87850	Infectious agent antigen detection by immunoassay with direct optical observation; Neisseria gonorrhoeae
88141	Cytopathology, cervical or vaginal (any system) requiring physician interpretation
88142	Cytopathology, cervical or vaginal (preservative fluid) under physician supervision

88143	Cytopathology, cervical or vaginal with manual screen & re-screen under physician supervision
88150	Cytopathology, slides, cervical or vaginal, manual screen under physician supervision
88152	Cytopathology, slides, cervical or vaginal with manual screening and computer-assisted rescreen under physician supervision
88153	Cytopathology, slides, with manual screen & re-screen under physician supervision
88155	Cytopathology, slides, cervical or vaginal, with definitive hormonal evaluation
88164	Cytopathology, slides, cervical or vaginal, (Bethesda System); with manual screening under physician supervision
88165	Cytopathology, slides, cervical or vaginal (Bethesda System); with manual screen & re-screen under physician supervision
88166	Cytopathology, slides, cervical or vaginal (Bethesda System), manual screen & computer-assisted re-screen under physician supervision
88167	Cytopathology, slides, cervical or vaginal, (Bethesda System), using cell selection and review under physician supervision
88174	Cytopathology, cervical or vaginal, (any reporting system), collected in preservative fluid, automated thin layer preparation, screen by automated system, under physician supervision
88175	With screen by automated system and manual rescreening or review, under physician supervision
88302	Level II surgical pathology, gross and microscopic (sterilization)
88305	Level IV surgical pathology, gross and microscopic (colposcopy)
ICD-10 Code	Description of Covered Diagnosis Codes
A51	Early syphilis (Select appropriate diagnosis code)
A51.0 – A51.9	
A53.9	
A60	Anogenital herpesviral (herpes simplex) infections (Select appropriate diagnosis code)
A60.0 - A60.9	
A54	Gonococcal infection (Select appropriate diagnosis code)
A54.0 – 54.21	
A54.24 – A54.29	
A54.5 – A54.6	
A54.9	
A55	Chlamydial Infections (Select appropriate diagnosis code)
A56.0 – A56.8	
A74.89-A74.9	
A57	Chancroid
A58	Granuloma Inguinale
A59	Trichomoniasis (Select appropriate diagnosis code)
A59.0 – A59.9	

A60	Anogenital herpesviral Infections (Select appropriate diagnosis code)
A60.00	
A60.03–A60.9	

A63	Other predominantly sexually transmitted diseases, not elsewhere classified (Select appropriate diagnosis code)
A63.0 - A64	
B37	Candidiasis (Select appropriate diagnosis code)
B37.3-B37.49	
B07.8-B07.9	Other viral warts
N34.1	Nonspecific urethritis
N86	Erosion and ectropion of cervix uteri
N87.0 - N87.9	Cervical dysplasia
N87.1	Moderate cervical dysplasia
N87.9	Dysplasia of cervix uteri, unspecified (Select appropriate diagnosis code)
N88	Other noninflammatory disorders of cervix uteri (Select appropriate diagnosis code)
N88.0 - N88.9	
R87.6	Abnormal cytological findings in specimens from female genital organs (Select appropriate diagnosis code)
R87.610 - R87.9	
Z01.41	Encounter for gynecological examination (Select appropriate diagnosis code)
Z01.411 - Z01.42	
Z11.5	Encounter for screening for other viral diseases (Select appropriate diagnosis code)
Z11.51-Z11.9	
Z30	Encounter for contraceptive management (Select appropriate diagnosis code)
Z30.0 - Z30.09	
Z30.2	Encounter for sterilization
Z32.0	Encounter for pregnancy test (Select appropriate diagnosis code)
Z32.00- Z32.02	

Appendix H: Procedure Codes to Identify Family Planning Services, Cancer Screening Services, and STD Screening Services

Family Planning Evaluation and Management Services	
<i>Evaluation and Management CPT Code</i>	<i>Description of Covered Codes</i>
99384FP	Family planning new visit
99385FP	
99386FP	
99394FP	Family planning established visit
99395FP	
99396FP	
99403FP	Family planning counseling visit
99211FP	Family planning supply visit
Contraceptive Services	
<i>Medication/Device CPT Code</i>	<i>Description of Covered Codes</i>
J1050	Injection medroxyprogesterone acetate (Depo-Provera)
J7300	Intrauterine copper device (Paraguard)
J7301	Levonorgestrel-releasing intrauterine contraceptive system (Skyla), 13.5 mg
J7297	Levonorgestrel-releasing intrauterine contraceptive system (Liletta), 52 mg
J7298	Levonorgestrel-releasing intrauterine contraceptive system (Mirena), 52 mg
J7307	Etonogestrel implant system, including implant and supplies (Nexplanon)
J7296	Levonorgestrel-releasing intrauterine contraceptive (Kylena), 19.5 mg
<i>Anesthesia, Surgical and Radiology CPT Code</i>	<i>Description of Covered Codes</i>
11981	Insertion, non-biodegradable drug delivery implant
11983	Removal with reinsertion, non-biodegradable drug delivery implant
57170	Diaphragm or cervical cap fitting with instructions
58300	Insertion of intrauterine device
58600	Ligation or transection of fallopian tube(s)
58615	Occlusion of fallopian tube(s) by device (e.g., band, clip, Falope ring)
58670	Surgical laparoscopy, with fulguration of oviducts (with or without transection)
58671	Surgical laparoscopy, with occlusion of oviducts by device (e.g., band, clip, or Falope ring)
76856	Ultrasound of pelvis, non-obstetric (to check placement of intrauterine devices)
76882	Ultrasound of extremity, limited, anatomic specific (to check for implantable contraceptive device)
88302	Level II surgical pathology, gross and microscopic (sterilization)
<i>Laboratory CPT Code</i>	<i>Description of Covered Codes</i>
81025	Urine pregnancy test, by visual color comparison

Cancer Screening Services	
Anesthesia, Surgical and Radiology CPT Code	Description of Covered Codes
57410	Pelvic examination under anesthesia
57452	Colposcopy of the cervix
57454	Colposcopy with biopsy(s) of the cervix and endocervical curettage
57460	Colposcopy with loop electrode biopsy(s)
88141	Cytopathology, cervical or vaginal (any system) requiring physician interpretation
88142	Cytopathology, cervical or vaginal (preservative fluid) under physician supervision
88143	Cytopathology, cervical or vaginal with manual screen & re-screen under physician supervision
88150	Cytopathology, slides, cervical or vaginal, manual screen under physician supervision
88152	Cytopathology, slides, cervical or vaginal with manual screening and computer-assisted rescreen under physician supervision
88153	Cytopathology, slides, with manual screen & re-screen under physician supervision
88305	Level IV surgical pathology, gross and microscopic (colposcopy)
Laboratory CPT Code	Description of Covered Codes
88155	Cytopathology, slides, cervical or vaginal, with definitive hormonal evaluation
88164	Cytopathology, slides, cervical or vaginal, (Bethesda System); with manual screening under physician supervision
88165	Cytopathology, slides, cervical or vaginal (Bethesda System); with manual screen & re-screen under physician supervision
88166	Cytopathology, slides, cervical or vaginal (Bethesda System), manual screen & computer-assisted re-screen under physician supervision
88167	Cytopathology, slides, cervical or vaginal, (Bethesda System), using cell selection and review under physician supervision
88174	Cytopathology, cervical or vaginal, (any reporting system), collected in preservative fluid, automated thin layer preparation, screen by automated system, under physician supervision

STD Screening Services	
Evaluation and Management CPT Code	Description of Covered Codes
99401FP	HIV counseling (pre-test) 15 min
99402FP	HIV counseling (post-test) 30 min
Laboratory CPT Code	Description of Covered Codes
86255	Fluorescent antibody; screen, each antibody (HIV & herpes)
86592	Syphilis test; qualitative (e.g., VDRL, RPR, ART)
86593	Syphilis test; quantitative
86689	HTLV or HIV antibody, confirmatory test (western blot)
86694	Herpes simplex, non-specific type test
86695	Herpes simplex, type 1
86696	Herpes simplex, type 2
86701	Antibody; HIV-1
86702	Antibody; HIV-2
86703	Antibody; HIV-1 and HIV-2, single assay
86706	Hepatitis B surface antibody (HBsAb)
86707	Hepatitis Be antibody (HBeAb)
86803	Hepatitis C antibody
87110	Culture, chlamydia
87205	Smear, primary source, with interpretation; Gram or Giemsa stain for bacteria, fungi, or cell types; (gonorrhea)
87206	Smear, primary source, with interpretation; (chlamydia)
87270	Infectious agent antigen detection by immunofluorescent technique, chlamydia trachomatis
87273	Infectious agent antigen detection by immunofluorescent technique, herpes simplex virus type 2
87274	Infectious agent antigen detection by immunofluorescent technique, herpes simplex virus type 1
87340	Hepatitis B surface antigen (HBsAg)
87341	Hepatitis B surface antigen (HBsAg) neutralization
87350	Hepatitis Be antigen (HBeAg)
87390	HIV-1
87490	Chlamydia trachomatis, direct probe technique
87491	Chlamydia trachomatis, amplified probe technique

STD Screening Services continued	
Laboratory CPT Code	Description of Covered Codes
87516	Hepatitis B virus, amplified probe technique
87520	Hepatitis C virus, direct probe technique
87521	Hepatitis C virus, amplified probe technique
87522	Hepatitis C virus, quantification
87528	Herpes simplex virus, direct probe technique
87529	Herpes simplex virus, amplified probe technique
87530	Herpes simplex, quantification
87534	HIV-1, direct probe technique
87535	HIV-1, amplified probe technique
87590	Neisseria gonorrhoeae, direct probe technique
87591	Neisseria gonorrhoeae, amplified probe technique
87592	Neisseria gonorrhoeae, quantification
87623	HPV low-risk type detection test
87624	HPV high-risk type detection test
87810	Infectious agent antigen detection by immunoassay with direct optical observation; chlamydia trachomatis
87850	Infectious agent antigen detection by immunoassay with direct optical observation; Neisseria gonorrhoeae